



DONIZETTI'S
**THE ELIXIR
OF LOVE**

A potent potion to drive devotion

APRIL 21, 24, 27, 29, 2018
STUDENT MATINEE: APRIL 26, 2018
BENEDUM CENTER

PITTSBURGH OPERA
2017-18 SEASON

Estate

JEWELRY

Set the stage for compliments and make a statement every time you wear a piece of fine jewelry from our Vintage & Contemporary Estate Collection. Affordable luxury that steals the spotlight.



Platinum rings featuring Rubies, Pink Tourmaline, and Precious Topaz.

Authentic • Curated • Quality

VINTAGE & CONTEMPORARY
Estate
JEWELRY COLLECTION



Celebrating 69 years in business!

trmoses@mosesjewelers.com
724.591.5776

Seven Fields • Butler

mosesjewelers.com

TABLE OF CONTENTS

THE ELIXIR OF LOVE

(L'elisir d'amore)

Music by Gaetano Donizetti

Libretto by Felice Romani, after Eugène Scribe's libretto for Daniel Auber's *Le philtre* (1831)

- 2 Letter From Our Board Leadership
- 3 Letter From Our General Director
- 5 The Cast
- 7 Synopsis
- 11 Artist Biographies
- 22 Director's Note
- 24 Learn About Opera
- 25 Student Matinee
- 26 The Monteverdi Society
- 27 Board of Directors
- 31 Annual Fund Listings
- 38 Orchestra
- 39 Chorus and Supernumeraries
- 43 Staff and Volunteers
- 44 Benedum Directory

Michele Fabrizi
Board Chair

Gene Welsh
Board President

Christopher Hahn
General Director

Antony Walker
Music Director

Allison M. Ruppert
Managing Editor

Greenawalt Design LLC
Graphic Design

To schedule your advertising in Pittsburgh Opera's program, please call 412-471-1497 or email advertising@culturaldistrict.org.

This program is published by Pittsburgh Opera, Inc., 2425 Liberty Avenue, Pittsburgh, PA 15222. Phone: 412-281-0912; Fax 412-281-4324; Website www.pittsburghopera.org.

All correspondence should be sent to the above address. Pittsburgh Opera assumes no responsibility for unsolicited manuscripts. Articles may be reprinted with permission. Copyright 2018 by Pittsburgh Opera, Inc. All rights reserved.

The official registration and financial information of Pittsburgh Opera, Inc. may be obtained from the Pennsylvania Department of State by calling toll free, within Pennsylvania, 1-800-732-0999. Registration does not imply endorsement.

COVER: ILLUSTRATIONS BY JOHN HINDERLITER. CAMPAIGN BY CRÈME FRAICHE DESIGN.

LETTER FROM OUR BOARD LEADERSHIP



DEAR FRIENDS,

Thank you for celebrating another glorious Pittsburgh Opera season with us. It has been immensely gratifying to present such a breadth of programming—one that continues to earn Pittsburgh Opera national and international acclaim.

- Our repertoire this year spans 230 years—from Mozart's **The Marriage of Figaro** to our second world premiere, **Savage Winter** (formerly called **Ashes & Snow**) by Douglas J. Cuomo.

- Our community programs reach over 20,000 adults and children through teacher training, in-school programs, and performances, with another 2,400 students and teachers attending this year's Student Matinee, **The Elixir of Love**.

- Our Resident Artists grow before our eyes. For the past three years, our Resident Artists have won prizes in the prestigious George London Awards.

Your support has given Pittsburgh Opera the ability to stretch, grow, and succeed. Gifts from individuals, events, and institutions account for more than 60% of our annual revenue. We could not achieve this level of quality without you. We thank all who have already contributed to this year's Annual Fund.

However, our fiscal year is not over yet. If you still have not given this year, we ask that you consider a gift to the Pittsburgh Opera Annual Fund or buy tickets for our fabulous Maecenas Gala on May 12. Please help us achieve our goals for artistic excellence and community engagement for next year and into the future.

As we conclude this season on such a high note with **The Elixir of Love**, we would like to express our deepest appreciation to our colleagues on the Board and all the staff, artists, technicians, and volunteers whose passion and indefatigable efforts make these remarkable performances possible.

Thank you again!

GENE WELSH
Board President

MICHELE FABRIZI
Board Chair

LETTER FROM OUR GENERAL DIRECTOR



DEAR FRIENDS,

Welcome to the Benedum Center for the final opera of our 2017-18 season, Donizetti's comic love story **L'elisir d'Amore**, or **The Elixir of Love**.

Donizetti was a prolific composer who wrote over 70 operas. Two of his most famous, **The Elixir of Love** (1832) and **Don Pasquale** (1843), are considered masterpieces of comic opera and continue to entertain audiences to

this very day. See them, and you'll know why they epitomize the *bel canto* ("beautiful singing") style of opera.

Our top-notch cast will delight and excite you: Russian soprano Ekaterina Siurina brings fun and sizzle to the role of Adina, the object of everyone's affections; our Nemorino, tenor Dimitri Pittas, is a Metropolitan Opera veteran called "one of the most exciting artists on the horizon today"; and baritone Zachary Nelson makes his Pittsburgh Opera debut as the dashing, boastful Belcore. The Italian bass Paolo Pecchioli is as entertaining a Dr. Dulcamara as you will ever see or hear. Joining these out-of-towners is our own Shannon Jennings as Giannetta, in her final role as a Pittsburgh Opera Resident Artist before she continues to the next stage in her career.

If you haven't already renewed your subscription for our 2018-19 season, I encourage you to do so today. It will combine classics **Madama Butterfly**, **Hansel & Gretel**, **La bohème**, and the aforementioned **Don Pasquale** with the contemporary American work **Glory Denied**, plus a brilliant new reimagining of Mozart's *Idomeneo* called **afterWARDS**. Stop by one of the lobby tables to lock in your seats and pick up your Thank You Chocolates from our friends at Trello Cioccolato. If you're not a subscriber, now is the perfect time to sign up—please vote your support of our great company by ensuring we will have full houses all next season, our 80th!

Now, please sit back and enjoy this "potent potion certain to inspire your devotion!"

Warmest Regards,

CHRISTOPHER HAHN
General Director

KNOW

the arts are the
highest form of
expression.

PNC is proud to be a part of the Pittsburgh Opera. Because we believe in and support all that the arts contribute to our community.

pnc.com



©2017 The PNC Financial Services Group, Inc. All rights reserved. PNC Bank, National Association. Member FDIC

THE CAST

THE ELIXIR OF LOVE

(*L'elisir d'amore*)

Music by Gaetano Donizetti

Libretto by Felice Romani, after Eugène Scribe's libretto for Daniel Auber's *Le philtre* (1831)

IN ORDER OF VOCAL APPEARANCE

Giannetta
Nemorino
Adina
Belcore
Dr. Dulcamara
Dr. Dulcamara's Assistant

Shannon Jennings*
Dimitri Pittas
Ekaterina Siurina+
Zachary Nelson+
Paolo Pecchioli
Simon Nigam

ARTISTIC TEAM

Conductor
Stage Director
Set Designer
Costume Designer
Lighting Designer
Wig & Make-up Designer
Choreographer
Assistant Conductor
Chorus Master
Associate Coach/Pianist
Guest Pianist
Assistant Director
Stage Manager

Christian Capocaccia
Daniel Slater+
Robert Innes Hopkins
Robert Innes Hopkins
Simon Mills+
James Geier
Timothy Claydon+
Glenn Lewis
Mark Trawka
James Lesniak
Luis Hernandez+
Frances Rabalais*
Cindy Knight

Pittsburgh Opera presents *The Elixir of Love*, first performed on May 12, 1832 at the Teatro della Canobbiana in Milan.

These performances mark the 7th production of *The Elixir of Love* at Pittsburgh Opera, the most recent in 2007.

Comic opera in two acts.

Sung in Italian with English texts projected above the stage.

Supertitles by Christopher Bergen.

Estimated performance time: 2 hours and 30 minutes including 1 intermission.

✂ In consideration of your fellow audience members, please turn off all personal electronic devices.

Pittsburgh Opera offers an Audio Commentary service for patrons with visual impairments during Tuesday performances. To pick up an Assistive Listening Device, simply present an ID at the Guest Services Center. Braille and Large-Print programs are also available at each performance.

Season Sponsor:



Tuesday Night Sponsor:

Ambridge Regional Distribution & Manufacturing Center

2018 Student Matinee Sponsors:

EQT
Highmark Blue Cross Blue Shield

+ Pittsburgh Opera debut
* Pittsburgh Opera Resident Artist

An Opera North Production

Cast subject to change without notice.





Spend your retirement years at home with a better alternative to long-term care.

Longwood at Home membership benefits include:

Plan options that meet your specific needs

- Coverage that begins when you need it
- No exclusions or waiting periods

Staying home and continuing your preferred lifestyle

- Relieve the burden of future care from your family members

A personal advocate

- A dedicated care coordinator who knows you and your family well
- Comprehensive support services

Financial protection

- Asset preservation, predictable costs and tax benefits

Put a plan in place now while you're healthy and active!

To learn more, call **1-877-317-0860** or visit www.LongwoodAtHome.org/StayTrue

 **Longwood at Home**[™]

A Presbyterian SeniorCare Network Program



SYNOPSIS

THE ELIXIR OF LOVE

ACT I

Scene 1. Nemorino, whose name accurately describes him as a “little nobody,” is smitten with the wealthy Adina, but can’t inspire love in her heart. (*Quanto è bella, quanto è cara*) Nemorino sees Adina reading a book in the square and wonders how a fool like him could possibly win her love. Everyone begs Adina to tell the story, so she reads the tale of Tristan, who bought a love potion from a magician in order to win the hard-hearted Isolde. If only they knew how to get the recipe!

A drum roll signals the arrival of a platoon of soldiers headed by handsome Sergeant Belcore. Arrogantly likening himself to Paris wooing a goddess, Belcore immediately proposes to Adina, much to Nemorino’s dismay. But when Adina says she needs time to think it over, Nemorino seizes the moment and declares his undying love for her. Irritated, Adina declares that she is capricious and fickle—he should look for love elsewhere.

Scene 2. Dr. Dulcamara, a fast-talking quack, arrives and sings the praises of his amazing elixir, guaranteed to cure all diseases—and even chase away mice and bugs! (*Udite, udite, o rustici*) Nemorino, who falls for the con like everybody else, asks if Dulcamara carries Isolde’s love potion. Dulcamara gives Nemorino a bottle of Bordeaux, warning him that it will only take effect after twenty-four hours (giving Dulcamara time to get away) and that it must be kept secret. Nemorino drinks enough to get tipsy, so when Adina comes by he is so full of confidence that he pretends to ignore her. (*Lallarallaa la la la la la*) Aggravated to find her swain so impervious to her charms, she promises to marry Belcore in six days. Nemorino isn’t worried because the elixir will be in effect the next day. But Belcore receives orders to leave the village in the morning, so Adina agrees to marry him immediately. Now that Nemorino is really desperate, Adina enjoys his torment. She invites everyone to the marriage feast, and Nemorino rushes away, moaning that the elixir has ruined him.

20-Minute Intermission

ACT II

Scene 1. While they’re waiting for the notary to arrive at the wedding, Dr. Dulcamara entertains everyone with a comic song. Adina, however, hesitates to continue because Nemorino isn’t there—she wants to complete her revenge. After the company goes off for the wedding toast, Nemorino sneaks in and begs Dulcamara for help. Always obliging, he prescribes another dose, but Nemorino is broke. Belcore finds Nemorino alone and talks him into signing up—what a victory to enlist your own rival! (*La donna è un animale stravagante*) Nemorino accepts, hoping the elixir will work before he leaves with the soldiers.

Scene 2. Rumor has it that Nemorino’s uncle has died, leaving him as heir to a fortune. All the girls flirt with Nemorino, who doesn’t know about the inheritance and thinks the potion is finally working. Adina is astonished at his popularity and realizes that she is jealous. When Dulcamara brags that it was his elixir that worked the miracle, Adina also learns that Nemorino has sold his freedom for her. She realizes that she is in love with him, and Nemorino is delighted to see her shed a tear on his behalf. (*Una furtiva lagrima*) Adina takes action, buying back the enlistment papers from Belcore and admitting to Nemorino that she loves him. When Dulcamara tells everyone about Nemorino’s inheritance, Dulcamara claims the credit—his elixir is so powerful, it can make rich men out of poor ones! As he leaves town in triumph, everyone wishes him well, except Belcore.

-- *freely adapted from Opera Today*

PITTSBURGH OPERA

Corporate donors and sponsors receive valuable benefits!

Perks to corporate donors include client and employee entertaining opportunities, season tickets, discount on facility rental, public recognition for your company and more. We also have opportunities available to sponsor our productions, programming and our spectacular galas.

Maximize your donation with a matching gift!

Remember, many companies match their employees' contributions to Pittsburgh Opera. To see if your company has a matching gifts program, simply contact your HR Department and request the appropriate form. It's fast and easy! Not only will you maximize the impact of your gift, but your company will receive valuable recognition in the Pittsburgh Opera program book.

Learn more: hurbany@pittsburghopera.org, 412-281-0912, ext. 256.



**“Our plan
is to save
what we can.
Beyond that,
we have
no plan.”**

Years down the road, it's likely that you will get very lost if you don't have a real financial plan. Talk to Allegheny Financial Group. With regular face-to-face meetings and our unbiased insight, we will create a clear plan together. A plan uniquely tailored to you. Your personal advisor and support team will work with you over the long term to fully understand, coordinate and optimize every facet of your finances. Give us a call, sooner rather than later. And let's prepare for the long, great adventure that awaits you.

INVEST IN YOUR PEACE OF MINDSM

 **Allegheny Financial Group**

Visit alleghenyfinancial.com or call **800-899-3880**.

Allegheny Financial Group is a Registered Investment Advisor. Securities offered through Allegheny Investments, LTD, a registered broker/dealer. Member FINRA/SIPC.



“Chocolate never tasted better.”
Website: www.trellochocolate.com
Phone: 800-222-6372

RESONANCE WORKS | PITTSBURGH

PITTSBURGH PREMIERE
OF DVOŘÁK'S

Rusalka

RACHELE SCHMIEGE, RUSALKA
STEFAN BARNER, PRINCE
LAUREL SEMERDJIAN, JEŽIBABA
MICHAEL SCARCELLE, VODNÍK
NATALIE POLITO, FOREIGN PRINCESS

ANDREW NIENABER, STAGE DIRECTOR
MARIA SENSI SELLNER, CONDUCTOR
RESONANCE CHAMBER ORCHESTRA

*In partnership with the University of Pittsburgh
Department of Theatre Arts!*

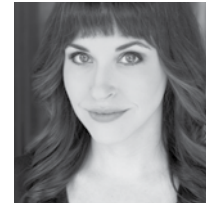
MAY 11 FRI 8PM
MAY 13 SUN 3PM

CHARITY RANDALL THEATRE
4301 FORBES AVENUE, OAKLAND

TICKETS: RESONANCEWORKS.ORG
NOW WITH RESERVED SEATING!
412-501-3330

ARTIST BIOGRAPHIES

THE ELIXIR OF LOVE



SHANNON JENNINGS: GIANNETTA

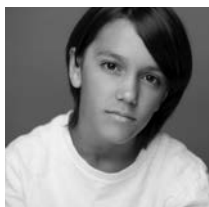
Shannon Jennings is a second-year Pittsburgh Opera Resident Artist in 2017-18. She was seen earlier this season as Aunt Sarah/Shrink/Iraqi Woman/*The Long Walk*. During her first-year as a Pittsburgh Opera Resident Artist, she performed as Costanza/*Richard the Lionheart* and Slave/*Salome*. She was a participant in the 2016 Merola Opera Program with the San Francisco Opera Center, as Anne Sexton/*Transformations*.

Other recent roles include Marguerite/*Faust* with Annapolis Opera, Fiordiligi/*Così fan tutte* with Opera Orlando, Mimi/*La bohème* with DC Public Opera, and Josephine/*H.M.S. Pinafore* with Virginia Opera. Ms. Jennings' other residencies have included the Virginia Opera Emerging Artist Program, Central City Opera, Ash Lawn Opera, the Wolf Trap Opera Studio, and the Mittelsächsisches Theater in Freiberg, Germany, where she started her career singing Pamina/*Die Zauberflöte*. She has sung with Washington Concert Opera, the Virginia Symphony, the Richmond Symphony, the Connecticut Valley Symphony Orchestra, and the Mittelsächsisches Philharmonie. Ms. Jennings was also a winner of the 2015 Annapolis Opera Vocal Competition, a Capitol District winner of the 2016-17 Metropolitan Opera National Council auditions, and recently won 2nd Prize in the 2017 Mildred Miller International Voice Competition here in Pittsburgh. Originally from Orlando, Florida, she earned her B.M. in Vocal Performance at Florida State University College of Music, where her roles at Florida State University Opera included Atalanta/*Serse*, Elaine O'Neill/*Later the Same Evening*, and First Lady/*The Magic Flute*. In the summer of 2018, Ms. Jennings will sing as an Apprentice Artist with Santa Fe Opera, covering Cio-Cio San/*Madama Butterfly*. *Mr. and Mrs. John E. Traina generously sponsor Ms. Jennings's residency.*



ZACHARY NELSON: BELCORE

Zachary Nelson makes his Pittsburgh Opera debut. He has been praised for his rich and powerful baritone, as well as his ability to embody dramatic and comic characters on the operatic stage. The 2017-18 season started with a joint recital with soprano Leah Crocetto and Pianist Mark Markham, a return to the Lyric Opera of Chicago as Ping/*Turandot*, and the title role in *Le nozze di Figaro* (Dresden Semperoper). He will be the baritone soloist in "Sacred Service (Avodat Hakodesh)" with the Voices of the Ascension. The 2016-17 season brought debuts at the Lyric Opera of Chicago as Donner/*Das Rheingold*, Escamillo/*Carmen* (Den Norske Opera), and a fourth season with the Santa Fe Opera as Enrico Ashton/*Lucia di Lammermoor*. A former ensemble member at the Dresden Semperoper, his roles included: Figaro/*Il barbiere di Siviglia*, Figaro and Conte/*Le nozze di Figaro*, Escamillo/*Carmen*, Guglielmo/*Così fan tutte*, Paolo/*Simon Boccanegra*, Belcore/*L'elisir d'amore*, Marcello/*La bohème*, and Der Sprecher/*Die Zauberflöte*. Previous seasons included debuts at the Salzburg Landestheater, Palm Beach Opera, and San Francisco Opera as Escamillo/*Carmen*; Malatesta/*Don Pasquale*, Figaro/*Le nozze di Figaro*, Angelotti/*Tosca* (Santa Fe Opera), Escamillo/*Carmen*, Masetto/*Don Giovanni* (Canadian Opera Company), Germont/*La traviata* (Lyric Opera of Virginia), Quinault/*Adriana Lecouvreur* (Opera Orchestra of New York), Herzog Robert/*Guntram*, Sciarrone/*Tosca* (Glimmerglass Opera), and a soloist in Steven Blier's "Killer B's" with the New York Festival of Song. He is a graduate of the Academy of Vocal Arts in Philadelphia, PA, and of The Catholic University of America in Washington, D.C. Mr. Nelson's awards include The George London Award from the 2012 George London Foundation, 1st prize from the 2012 Opera Index Competition, The 2012 Liederkrantz Foundation Competition (General Opera Division), the 2012 Licia Albanese-Puccini Foundation, 2nd prize from the 2011 Gerda Lissner Competition, the 2011 Giulio Gari Foundation, and the 2011 Loren Zachary Competition.



SIMON NIGAM: DR. DULCAMARA'S ASSISTANT

Simon Nigam returns to the stage at Pittsburgh Opera after recently appearing as Virgil/*The Long Walk* and debuting in 2015 as Flavio/*Rodelinda*. A sixth grade Theatre major at Pittsburgh CAPA, he has performed with the Pittsburgh CLO (Tiny Tim, Cratchit Child/*A Musical Christmas Carol*), Prime Stage Theatre (*Dill/To Kill a Mockingbird*), Carnegie Mellon University (*Little Boy/Ragtime*), University of Pittsburgh Stages (*Young Guido/Nine*; *The Dauphin/Marie Antoinette*), and numerous community theaters. He is also a 2016 winner, 2017 finalist, and 2018 honorable mention of the Pittsburgh Public Theater's Shakespeare Monologue and Scene contest.



DIMITRI PITTAS: NEMORINO

Dimitri Pittas returns to the Pittsburgh Opera stage, having last performed as Rodolfo/*La bohème* (2003). He has performed on leading opera stages throughout North America and Europe, including debuts with the Bavarian State Opera, the Vienna State Opera, and the Royal Opera, Covent Garden. He is a graduate of the Metropolitan Opera's Lindemann Young Artist Development Program and has been heard on the Met stage as Rodolfo/*La bohème*, Macduff/*Macbeth*, Nemorino/*L'elisir d'amore*, and Tamino/*Die Zauberflöte*. Operatic engagements of the current season include Alfredo/*La traviata* with Houston Grand Opera. In concert he performs Verdi's *Requiem* with the Atlanta Symphony and the Portland Symphony and Puccini's *Tosca* with the Charleston Symphony Orchestra. Last season, Mr. Pittas sang Verdi's *Requiem* for the BBC Proms with the Orchestra of the Age of Enlightenment led by Marin Alsop, Beethoven's *Symphony No. 9* with the Oslo Philharmonic, and Rachmaninoff's *The Bells* with the Orchestre Metropolitain de Montreal, under the baton of Yannick Nézet-Séguin. Operatic engagements included Nemorino/*L'elisir d'amore* with Houston Grand Opera, a return to the Bolshoi Opera in the title role of *Don Carlo*, his role debut as Lt. Pinkerton/*Madama Butterfly* with Washington National Opera, and performances of Alfred/*Die Fledermaus* with Santa Fe Opera.



PAOLO PECCHIOLI: DR. DULCAMARA

Paolo Pecchioli returns to Pittsburgh Opera, most recently here as Don Magnifico/*La cenerentola* (2013), Osmin/*The Abduction from the Seraglio* (2012), Basilio/*The Barber of Seville* (2010), and Mustafà/*The Italian Girl in Algiers* (2009). The Italian Bass began his career singing Don Tritemio/*Il Filosofo di Campagna* with the Settimana Musicale Senese in Siena, Italy and has since debuted more than 45 principal roles in theatres around the world. On the operatic stage, he has become an expert in Rossini, Verdi, and *bel canto* repertoire and has sung it in theatres all around the world including Washington National Opera, Gran Teatro del Liceu Barcelona, Bolshoi Theatre Moscow, Dallas Opera, Pittsburgh Opera, Victorian Opera in Melbourne, Hanoi State Theatre, Opera Ireland, Grange Park Opera, Holland Park Opera, Teatro Verdi Busseto, Staatsoper Dresden, Teatro Gayarre Pamplona, and many more theatres in Italy including Maggio Musicale Fiorentino, Torre del Lago Festival, Teatro Regio Torino, Teatro Verdi, Trieste, Teatro Carlo Felice, Genoa, Teatro Comunale Bologna, Teatro Lirico di Cagliari, and Teatro Petruzzelli in Bari. Concert highlights include appearances at Tchaikovsky Hall in Moscow, Carnegie Hall in New York, Concertgebouw Amsterdam, Auditorium di Milano, Münchener Rundfunkorchester, Orchestra Sinfonica di Milano G. Verdi, and Orchestra Toscanini di Parma. He has recorded Alidoro in *La cenerentola* for Sony alongside Vesselina Kasarova. His other recordings include a DVD of *Cleopatra* by Lauro Rossi (Cesare Ottaviano Augusto) directed by Pierluigi Pizzi, a DVD of *Aida* (Il Re) directed by Franco Zeffirelli, and the world premiere of *Jazz Te Deum* and *Sacred Concert* by jazz musician and composer Giorgio Gaslini.



EKATERINA SIURINA: ADINA

Russian soprano Ekaterina Siurina makes her debut with Pittsburgh Opera. During her studies at the Russian Academy of Theatrical Arts in Moscow, Ms. Siurina became a soloist with the Municipal Moscow Theatre, Novaja Opera. After garnering honors at the 2000 International Elena Obrazova competition for singers of Chamber Art in Moscow, and the 2002 Opera competition in St. Petersburg, she was declared a winner at the Rimski-Korsakov competition in St. Petersburg. In 1999, while still a student, Ms. Siurina made her professional role debut as Gilda/*Rigoletto*. She performed as soloist including the title role/*Maria Stuarda*, *Snowmaiden*, and again appearing as Gilda/*Rigoletto* and a co-production at the Savonlinna Festival, Finland. Prominent solo debuts include appearances as Giulietta/*I Capuleti e Montecchi* (Opera de Montpellier, Royal Opera de Wallonie, and Brussels), *I puritani* at the Opera de Monte-Carlo, and also Adina/*Elisir d'Amore* at the Staatsoper Berlin and Staatsoper, Hamburg. Significant role debuts have included Gilda at the Royal Opera, Covent Garden, Deutsche Oper Berlin, and Bordeaux Opera Servilia. Ms. Siurina made her Metropolitan Opera debut in October 2006 singing the role of Gilda with Juan Pons. She was invited back to the Metropolitan in November 2007, to sing the role of Susanna/*Le nozze di Figaro*. In addition to opera, Ekaterina has also appeared on the concert stage, performing solos throughout Europe. Ms. Siurina adds to her current season role debuts as Donna Anna/*Don Giovanni* at the Wiener Staatsoper and Mimi/*La bohème* at The Royal Opera, Covent Garden. She also made her much anticipated debut as Gilda at Arena di Verona in Verdi's *Rigoletto* this season.



CHRISTIAN CAPOCACCIA: CONDUCTOR

Italian conductor Christian Capocaccia returns to Pittsburgh Opera, having conducted *La traviata* (2016). His ease on the podium and comfortable coaching style with musicians and singers alike have made him a favorite with orchestras, opera companies, and vocalists. The 2017-18 season is marked by the increasingly close relationship Mr. Capocaccia enjoys with the arts community in Syracuse, NY. In September he began a three-year agreement with the Syracuse Symphoria, assuming the title of Associate Conductor and Youth Orchestra Music Director. He was announced as the new Music Director of the Syracuse Opera, and will conduct all performances in the upcoming 2018-19 season. In the 2016-17 season, he completed his 5th and final season as Music Director of the Stamford Young Artists Philharmonic. He returned to Syracuse Opera to lead performances of *Rigoletto*. In the 2015-16 season, he took the Stamford Young Artists Philharmonic ensemble to New York City for their Carnegie Hall debut. For the Spring semester of 2016, he served as adjunct professor and visiting conductor with Montclair State University's opera department. In the Fall of 2015, he returned to the Manhattan School of Music to lead the Philharmonia Orchestra in a symphonic concert, and made his debut with Syracuse Opera in *La bohème*. His performances with the Wallingford Symphony Orchestra in March marked his debut with that ensemble. He previously held positions as assistant conductor of the Dallas Opera, resident conductor of the Fischer Center at Bard College, assistant conductor of the IU New Music Ensemble, and assistant professor of conducting at the State University of New York College at Fredonia. He has regularly conducted AsLiCo, and has recently conducted operas with the Manhattan School of Music and the Welsh National Opera. He is a former Aspen Music Festival Conducting Fellow, where he studied with David Zinman and Murry Sidlin. Born in Rome, he attended the Santa Cecilia Music Conservatory, studying under Paolo Ciociola and completed his studies with world-renowned violinist Nina Beilina in New York. Subsequently he studied composition under Boris Porena and Luciano Pelosi, and conducting with Piero Bellugi and Donato Renzetti. A graduate of Indiana University Jacobs School of Music in Bloomington under David Effron, he has participated in Master classes with Herbert Blomstedt, Gustav Meier, and Leonard Slatkin. As a guest conductor, Mr. Capocaccia has appeared both in the United States and Europe leading ensembles such as the Orchestra di Roma e del Lazio, Moscow Ballet Orchestra, Orchestra Sinfonica Città di Grosseto, Orchestra Città Aperta, International Chamber Ensemble, Orchestra da Camera delle Marche, and Orchestra Sinfonica di Pesaro among others.



DANIEL SLATER: STAGE DIRECTOR

Daniel Slater began his career as acting Artistic Director of the Tricycle Theatre and Associate Director of the Nottingham Playhouse. For the last two decades he has worked as a freelance international opera director. His first major production, *The Bartered Bride*, was nominated for numerous awards (including the TMA "Outstanding Achievement in Opera" and Manchester Evening News Best Opera Production 1998/99) and went to Strasbourg, Valencia, and New Zealand. Other awards include: *The Cunning Little Vixen* (What'sOnStage Best New Production, 2015); *Tannhäuser* (Aasta Lavastus Production of the Year in Estonia, 2014); *Romeo and Juliet* (nominated for the President's Prize, Singapore); *Samson* (nominated for Manchester Evening News Best Opera Production 2008); *Don Pasquale* (Gramophone Magazine Best Opera Production on DVD 2007); and *Wozzeck* (Arts Event of the Year, New Mexico, 2001). Mr. Slater has directed sixty productions in seventeen countries all over the world, including in major opera houses such as Glyndebourne, Welsh National Opera, Opera North, Strasbourg, Geneva, the Palau de les Arts in Valencia, the Royal Opera Stockholm, the Norwegian National Opera, Flanders Opera, the Komische Oper Berlin, Bregenz Festival, Santa Fe, Houston Grand Opera, and San Francisco. A fluent speaker of French, German, Spanish, Swedish, and Italian, he was educated at the United World College of the Atlantic, received a 1st class degree in English Literature from Bristol University then went to Corpus Christi College, Cambridge, where he was awarded a PhD for his research on Nietzsche's Influence on D.H. Lawrence.



ROBERT INNES HOPKINS: SET DESIGNER AND COSTUME DESIGNER

Robert Innes Hopkins's opera credits include: *Das Rheingold*, *Die Walkure*, and *Rigoletto* (Lyric Opera Chicago); *In Parenthesis*, *War and Peace*, *Rigoletto*, and *Flying Dutchman* (Welsh National Opera); *Madama Butterfly* (Den Jyske Opera); *Charodeika* (Teatro di San Carlo, Naples); *The Italian Girl in Algier*, *Peter Grimes*, and *Billy Budd* (Santa Fe Opera); *Lohengrin* and *The Cunning Little Vixen* (San Francisco Opera); *Tristan und Isolde* (La Fenice Venice); *Aida* (Opera Holland Park); *The Cunning Little Vixen* and *Mamoetto II* (Garsington Opera). Theatre Credits include: *Julius Caesar*, *Anthony and Cleopatra*, *Titus Andronicus*, *Coriolanus*, *Don Quixote*, and *Oppenheimer* (RSC); *Neville's Island*, *Speed the Plow*, and *Clybourne Park* (West End); *Kenny Morgan* (Arcola); *Other Desert Cities* (Old Vic); *Noises Off* (Nottingham Playhouse/Northern Stage/Nuffield Southampton); *The Crucible* and *Swallows and Amazons* (Bristol Old Vic); *Kafka's Dick* (Theatre Royal Bath); *King Lear* (Chichester Festival Theatre/BAM); *The Boy in the Striped Pyjamas* (Chichester Festival Theatre/UK Tour); *A Doll's House* (NT Scotland); *The Crucible* (Bristol Old Vic); *Twelfth Night* and *Romeo and Juliet* (Regent's Park); *Arturo Ui* (New York); *The Weavers* (awarded Critics Circle Designer of the Year at The Gate), and *The Member Of The Wedding* (Young Vic).



SIMON MILLS: LIGHTING DESIGNER

Simon Mills, winner of the 1999 Variety Magazine Best Newcomer Award, designed lighting for **Lohengrin**, which has been seen at Houston Grand Opera, Geneva, and San Francisco. This production of **The Elixir of Love** has been staged in Oviedo and at Opera North, Houston Grand Opera, Welsh National Opera, and the New Zealand Festival. Mr. Mills's current and recent work includes **Alcina** (Madrid and Bordeaux) and **Luisa Miller** (Lyon), both with director David Alden; **Die Fledermaus** (National Opera Korea) with Stephen Lawless; **The Bartered Bride** (Opera North and New Zealand Opera), with Daniel Slater; and **The Threepenny Opera** (Gate Theatre, Dublin) and **Twelfth Night** (Abbey, Dublin), both directed by Wayne Jordan. Other work includes **Tristan und Isolde** (Oslo); **The Cunning Little Vixen** (Bregenz, San Francisco, Geneva); **Manon Lescaut** (Opera North, Oslo, Oviedo), **Maometto II** (Strasbourg), and **Rigoletto** (Grange Park Opera), all directed by Daniel Slater. Mr. Mills's work has also been seen at the Operosa Festival in Bulgaria, in open-air performances on the grounds of the Euxinograd Palace; and in Cologne, Malmö, London, Hamburg, Zurich, Shanghai, Scotland, Copenhagen, Toronto, and many other cities internationally.



JAMES GEIER: WIG & MAKEUP DESIGNER

James Geier returns to Pittsburgh Opera for a fourteenth season after recently completing his thirteenth season at Cincinnati Opera. He formerly worked as a staff makeup artist and wigmaker for a decade with San Francisco Opera and, more recently, as resident wig and makeup designer for Florida Grand Opera. Mr. Geier is a graduate of the Theatre Arts Department at Brandeis University and completed apprenticeships with both the San Francisco and Santa Fe operas. He has worked for several film companies, including Lucasfilms Ltd., as well as an impressive number of opera, ballet, and theatre companies. His credits include the Denver Center Theatre Company, Cincinnati Shakespeare Company, Cincinnati Ballet, Spoleto Festival USA, Opera Theatre of Saint Louis, Baltimore Opera, Austin Lyric Opera, Seattle Opera, Tulsa Opera, Fort Worth Opera, Opera Omaha, Portland Opera, the Bolshoi Ballet, Kirov Ballet, San Francisco Ballet, Fresno Grand Opera, and American Ballet Theatre.



TIMOTHY CLAYDON: CHOREOGRAPHER

Tim Claydon trained in classical dance and was an aerialist/trapeze artist. He has choreographed five of **The Little Greats** (Opera North); **Romeo and Juliet** (The Globe); **Pyramus and Thisbe** (Canadian Opera Company); **La traviata**, **Don Carlos** (Houston Grand Opera); **Parsifal** (Lyric Opera of Chicago); **Andrea Chénier**, **La Rondine**, **Albert Herring** (Opera North); **Carmen** (Vlaamse Opera); **The Elixir of Love** (Welsh National Opera, Opera North, Houston, Oviedo); **Falstaff**, and **I Capuleti e i Montecchi** (Opera North, Melbourne, Sydney); **La bohème**, **The Bartered Bride** (Opera North, Valencia, New Zealand); **Il turco in Italia** and **Veronique** (Buxton); **The Tales of Hoffman** (Malmö); **Grimes on the Beach** (Aldeburgh); and **Madama Butterfly** (Oviedo).



GLENN LEWIS: ASSISTANT CONDUCTOR

Glenn Lewis, a native of Rochester, New York, has worked as Pittsburgh Opera Head of Music since January 2008. He has served as pianist, vocal coach, and assistant conductor primarily to Music Director Antony Walker on most of the main stage productions of the past several seasons. These include **Tosca**, **Eugene Onegin**, **Samson & Dalila**, **Rigoletto**, **Don Giovanni**, **The Grapes of Wrath**, **Orphée**, and **Aida**. He made his conducting debut in 2009 with the Resident Artist production of **Don Pasquale** and has since conducted **Little Women**, **Dark Sisters**, **Hänsel und Gretel**, among others. In February 2017 he made his debut with Dayton Opera, conducting **The Abduction from the Seraglio**. In the spring of 2016, he was in Washington, D.C. at the Kennedy Center working as an assistant conductor for the **Wagner Ring Cycle** at the Washington National Opera. For 16 seasons he has been on the staff of the Santa Fe Opera. There he has worked on productions including **Wozzeck** and **Salome** with Maestro David Robertson and **Peter Grimes** with Maestro Alan Gilbert. He worked for 11 years in the opera houses in Cologne and Düsseldorf, Germany. There he conducted productions of **La cenerentola**, **Orpheus in the Underworld**, **Zar und Zimmermann**, and **My Fair Lady**. He assisted Maestri James Conlon, John Fiore, Donald Runnicles, among others, on works including **Elektra**, **The Makropulos Case**, **Der Rosenkavalier**, and **Meistersinger von Nürnberg**. This spring, he makes his debut with Syracuse Opera conducting **Madama Butterfly**. Past engagements include the Metropolitan Opera and Lyric Opera of Chicago. He is a frequent recitalist in solo, chamber, and vocal repertoire. He holds degrees in piano performance from Ithaca College, Northwestern University, and an Artist Diploma in Opera Coaching and Conducting from Cincinnati Conservatory of Music.



MARK TRAWKA: CHORUS MASTER

Mark Trawka joined Pittsburgh Opera as Director of Musical Studies for the prestigious Pittsburgh Opera Resident Artist Training Program in the 2003-04 season. In the 2006-07 season, he also took on the position of Chorus Master. Mr. Trawka coaches and performs with the Resident Artists and has also accompanied renowned mezzo-soprano Marianne Cornetti in her Pittsburgh recital appearances. He has been a member of the music staff at Houston Grand Opera, Dallas Opera, and Portland Opera (Oregon), where he was principal pianist and assistant chorus master. Mr. Trawka served as coach/accompanist at Chautauqua Opera and at Glimmerglass Festival for many summer seasons. In the summer of 2006, he was director of the resident artist program at Berkshire Opera. He was a music director at Tyrolean Opera Program in the summer of 2014. Mr. Trawka has been a member of the coaching faculty at the renowned Songfest for the last three summer seasons, where he has also conducted choral performances. He made his opera conducting debut at Pittsburgh Opera with the Resident Artist production of Ricky Ian Gordon's **27**. Educated at the Eastman School of Music and the University of Southern California, Mr. Trawka began his operatic career in the Houston Opera Studio and in San Francisco Opera's Merola Program.



JAMES LESNIAK: ASSOCIATE COACH/PIANIST

A native of Kenosha, Wisconsin, James Lesniak joined the Pittsburgh Opera music staff in 2006. After initial studies with Sheila Wiesztort, he received his Bachelor's and Master's degrees at Indiana University, where he studied with pianists Menahem Pressler, Karen Shaw, and Evelyne Brancart. His university credits include music staff work for Mississippi State University and the Indiana University Opera Theatre. Further studies included an apprenticeship with the Domingo-Cafritz

Young Artist Program at Washington National Opera for two seasons, where he gave his stage debut in the non-singing/piano playing role of Lazinski in *Fedora* at the Kennedy Center, accompanying Plácido Domingo in the opera. In addition, Mr. Lesniak has served on the coaching staff of Brevard Music Center, Glimmerglass Opera, Washington National Opera at the Kennedy Center, and the National Symphony. He has been an official pianist for the Metropolitan Opera National Council Auditions, and also made his conducting debut in 2017 with Pittsburgh Opera's production of composer Laura Kaminsky's *As One*. For the summer months, he frequently returns to the music staff of the prestigious Santa Fe Opera, where recently, he served as Musical Director for their Winter Concert Tour.

Mrs. J. William Futrell generously sponsors Mr. Lesniak.



LUIS HERNANDEZ: GUEST PIANIST

Luis Hernandez began his piano studies at the age of eight in Santiago, Dominican Republic, where he received his training at the Institute of Arts under Hilda Melis. In 2006, Mr. Hernandez was awarded a full scholarship from the Boston Conservatory to study with Professor Max Levinson, and earned his Bachelor's Degree in 2010. He has performed extensively as a soloist and chamber musician in the Dominican Republic, Peru, Italy, and United States. He has performed solo and

chamber works at the Killington Music Festival, at the Piccolo Spoleto Festival, and performed as a soloist with the Munster Hochschule Chamber Orchestra, and the Parlarte Orchestra at the Music Fest Perugia in Italy. He has won numerous awards in various national competitions in the Dominican Republic, including First Prize at the Olympic Sonatinas Competition, First Prize at the V Latin American Music Festival, and Second Prize at the Manuel Rueda Piano Competition. At an international level, he has won Third Prize in the Steinway Competition in Boston, MA in 2007, and won the Honors Competition at Boston Conservatory the following year. In Pittsburgh, he has performed with Carnegie Mellon's Contemporary Ensemble the intricate *Double Sextet* by Steve Reich. Also, he has appeared as soloist with Carnegie Mellon's Baroque Ensemble, performing Mozart's *B flat Major Piano Concerto*, K. 595, and with Carnegie Mellon's Philharmonic performing Gershwin's *Rhapsody in Blue*. Most recently, he was featured soloing with the Duquesne Symphony Orchestra performing Prokofiev's *Second Piano Concerto in G minor*. Currently, he is pursuing an Artist Diploma Degree at Duquesne University under David Allen Wehr. When he isn't glued to a piano bench, he enjoys reading, playing sports, and teaching in his private studio in Squirrel Hill.

Eddie Merlot's
prime aged beef and seafood

A PLACE TO ESCAPE AND ENJOY

It's time you discovered the quality, exceptional hospitality and unparalleled atmosphere that have made Eddie Merlot's one of America's great steakhouses. Visit us to experience the best in fine dining.

HAPPY HOUR • PRIVATE DINING ROOMS • PATIO • BAR & LOUNGE • SPECIAL OCCASIONS
Enjoy free parking in the Gateway Garage when you dine with us after 5 p.m.!

EXCEPTIONAL  Experiences

444 Liberty Avenue, Suite 100 in Four Gateway Center | 412-235-7676 | eddiemerlots.com

30 YEARS **ESO** **EDGEWOOD SYMPHONY ORCHESTRA**

Walter Morales, Music Director

A MAGNIFICENT FINALE!

SOLOISTS:
MARIANNE CORNETTI
TINA FAIGEN

MAY 6, 2018 4:00 PM
CARNEGIE MUSIC HALL
CORNETTI

TICKETS: edgewoodsymphony.org

JULY 6-22

WINCHESTER THURSTON SCHOOL



412-326-9687

pittsburghfestivalopera.org

Wagner
RHINEGOLD

Puccini
LA BOHÈME WARHOLA

Strauss
ARABELLA

Bernstein
BERNSTEIN ON BROADWAY

A Centennial Celebration

and special guest
JANE EAGLEN

Director, Mastersingers Project for
Young Dramatic Voices

IN RECITAL

**PITTSBURGH
FESTIVAL
OPERA**
INTIMATE OPERA THEATER

Pittsburgh Festival Opera is not affiliated with Pittsburgh Opera

AN INTERVIEW WITH STAGE DIRECTOR DANIEL SLATER

Daniel Slater sat down with us and shared his insights on **THE ELIXIR OF LOVE**.

What made you want to direct this piece?

It appealed to me as being a very human comedy. The characters are very real. The basic core situation—this boy is hopelessly in love with this girl, who he thinks is unobtainable—is evocative of things all of us have felt. The aspiration of the story, and the way that he wins the day are so heartwarming and touching, that I wanted to find the best way to tell this story.

How does this particular production enhance what is already a wonderful opera?

I don't ever update for the sake of updating. If I update, it is because I want to enhance the piece as I see it. If you do the piece straight, the risk is that the characters seem a little distant from us, because they're farmers in the 19th century and it's a long, long way from us. And particularly Nemorino can come across as being a bit stupid, because in a 19th-century context, he's uneducated and illiterate. I generally have a distaste for making characters weak or not clever. The 1950s setting is extremely aesthetically pleasing. It's not so far away from us that we can't recognize it, but far enough away from it to feel that slight distance, which is useful for comedy. We can give him a bit more humanity, and we can make the chorus characters more varied rather than just being farmers.

What are some of the challenges that this production presents?

Getting away from some of the character stereotypes. Making Belcore feel a bit more suave and sophisticated, instead of 'good looking but stupid'. The challenge of trying to chart a journey for Dulcamara.

The challenge for Adina, who's the key one actually, is not making her feel mean. I've seen productions where she is so self-absorbed that when she finally gets together with Nemorino in the end you want to ask him, "are you sure you want to do this?" So, to try to find a way to make her kittenish and playful, a woman who's got deep feelings that she is scared of acknowledging and dealing with. That's something we can all relate to, and by doing that we can be on her side as well.

Beyond that the chorus scenes are a challenge. The chorus scenes are very important in this piece. The way that the choreographer Tim Claydon and I work is very detailed. To try to shove all that detail in and not overload the choristers, but challenge and excite them is definitely a challenge.

What are some of your favorite things about this production?

The idea that Dulcamara would arrive in a hot air balloon, which actually preceded everything in the production. When I was going through the story, I saw Nemorino in a desperate situation looking for help from anywhere. And I re-watched "It's a Wonderful Life", and started thinking of Dulcamara as a kind of 'good angel' who descends down from the sky.

I also love the craziness of the girls' scene, which is the second scene of the second act. This gaggle of 20 women who've had girl time in the bar all night long and then are trying to make themselves look pretty to be attractive to Nemorino because he's rich, I think is such a brilliant situation comedy.



Nemorino (Dimitri Pittas) enlists the aid of Dr. Dulcamara (Paolo Pecchioli)
Photo: David Bachman Photography®

LEARN ABOUT OPERA



FOR PARENTS & GRANDPARENTS

Connect *The Elixir of Love* with many academic areas in children's lives:

ARTS AND HUMANITIES:

Donizetti was familiar with the greatest singers of his day, and often created roles for specific singers, such as Giuseppe Frezzolini as Dr. Dulcamara. Who are your favorite singers today?

BUSINESS, COMPUTER, AND INFORMATION TECHNOLOGY:

Dr. Dulcamara offers to sell his elixir for a bargain. What is this sales technique called? Find and analyze an online sales pitch for a "miracle" cure.

CAREER EDUCATION AND WORK:

What current professions employ traveling salespeople? What skills are needed to be a successful salesperson?

CIVICS AND GOVERNMENT:

Dr. Dulcamara is a charlatan. Is he legally allowed to sell his "magic potions"? What does the legal phrase "caveat emptor" mean? How does it apply to Dulcamara's wares?

DRIVER EDUCATION:

This opera production stages Dr. Dulcamara entering in a hot air balloon. Compare the skills and training needed to operate a hot air balloon to those of an automobile.

ECONOMICS:

Investigate the earning potential of traveling salesmen. How do salesmen who work in several states handle their tax liabilities?

ENGLISH LANGUAGE ARTS:

Compare the characters in *The Elixir of Love* to the stereotypes from Italian *commedia dell'arte*. Create a chart that contrasts the stereotypes to the opera characters.

ENVIRONMENT AND ECOLOGY:

Compare the different modes of transportation depicted in this opera: hot air balloon, Vespas, and automobiles. Which mode is more environmentally friendly? Compare gas mileage from a Vespa to another fuel efficient vehicle, such as a Smart car or Prius.

FAMILY AND CONSUMER SCIENCES:

Nemorino was the sole heir to his uncle's estate. What is a sole heir? What are the steps to develop

a will? How does this status change Nemorino's marriage prospects?

GEOGRAPHY:

Dulcamara's "elixir" is really a bottle of wine, and Italy is famous for wine. Create a map of Italy that shows its famous wine-making regions and their geographical, land, and climate features.

HEALTH, SAFETY, AND PHYSICAL EDUCATION:

Dulcamara uses red wine as his "elixir of love." What are some actual, medical benefits of drinking red wine? Why is alcohol used in medicines?

HISTORY:

Trace the meaning of the term "patent medicine" throughout history. How has the meaning changed and who has benefitted the most?

MATHEMATICS:

Dr. Dulcamara says his potion would take effect in 24 hours (giving him enough time to leave town). How quickly do medicines/drugs take effect today? How long would it take someone to leave town before being discovered today? How can someone's travels be traced?

SCIENCE AND TECHNOLOGY AND ENGINEERING EDUCATION:

This production of *The Elixir of Love* features Vespa scooters, the ubiquitous Italian motorbikes once popularized by Audrey Hepburn and Gregory Peck in the 1953 movie *Roman Holiday*. The scooters are crafted by a company that originally manufactured aircraft. Investigate a Vespa's ratio of strength and rigidity compared to its weight, the type of internal combustion engine, its simple seating design, and the importance of the front panel.

WORLD LANGUAGES:

Do *The Elixir of Love* character names have any meaning or significance in Italian? Find out what the names Dulcamara, Nemorino, Adina, and Belcore mean.

PITTSBURGH OPERA
E D U C A T I O N

STUDENT MATINEE

THE ELIXIR OF LOVE

Student Matinee is performed by the Resident Artists and guest artists of Pittsburgh Opera on **April 26, 2018 at 10:30 AM.**

IN ORDER OF APPEARANCE:

Giannetta
Nemorino
Adina
Belcore
Dr. Dulcamara
Dr. Dulcamara's Assistant

Shannon Jennings*
Eric Ferring*
Ashley Fabian*
Ben Taylor*
Paolo Pecchioli
Simon Nigam

THE ARTISTIC TEAM:

Conductor
Stage Director

Christian Capocaccia
Frances Rabalais*

* Pittsburgh Opera Resident Artist

Pittsburgh Opera's Student Matinee is a complete performance of Donizetti's madcap romantic comedy with full orchestra, professional singers, chorus, and production elements.

Student Matinee Sponsors:



PITTSBURGH OPERA'S EDUCATION PROGRAMS ARE GENEROUSLY SUPPORTED WITH EITC CONTRIBUTIONS FROM:

American Eagle Outfitters

Dollar Bank

First Commonwealth Bank

Hefren-Tillotson

Highmark Blue Cross Blue Shield

The Huntington National Bank

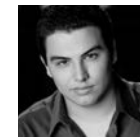
Levin Furniture

Triangle Tech

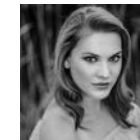
UPMC and UPMC Health Plan



Shannon Jennings



Eric Ferring



Ashley Fabian



Ben Taylor



Paolo Pecchioli



Christian Capocaccia



Frances Rabalais



HELP ENRICH THE LIVES OF FUTURE OPERA LOVERS.

Pittsburgh Opera owes its longevity and success over the past 79 years to thousands of friends in the region who have demonstrated their passion by loyally subscribing, encouraging friends and family to attend performances, volunteering time and talent, and generously contributing to the Annual Fund each year. We appreciate the continued kindness and generosity of individuals who recognize the beauty that Pittsburgh Opera brings to their lives—and make it a priority to provide financial support.

Pittsburgh Opera is especially grateful to those who have deepened their commitment by making a legacy gift and joining the Monteverdi Society. These unique and meaningful gifts have a tremendous impact on the well-being of the company, both financially and artistically.

For more information on the Monteverdi Society and planned giving options, please contact **Kathleen Butera** at **412-281-0912, ext. 259**.

Anonymous
The Estate of Ms. Jean Barnhart
The Estate of Zelma Smith Bausch
The Estate of Edith H. Blattner
The Estate of Mrs. Shirley Dilanni
John and Virginia DiPucci
The Estate of Mrs. Philip Dressler
Dr. & Mrs. Eugene and Katrin Engels
The Estate of Mrs. M. O. Fabiani
The Estate of Anna Greenberg
The Estate of Nancy Harnett
The Estate of Silvia Hayes
The Estate of John H. Hill, Esq.
The Estate of Doris M. Hunter
The Estate of Florence Jacob
The Estate of Mrs. Virginia Byerly Kerr
Mr. Arthur J. Kerr
The Estate of Raymond Krotec
The Estate of Walter Kruczek
Dr.* & Mrs. Michael Kutsenkow
Marcia Landy
The Estate of Mr. & Mrs. G. Christian Lantzsch
Dr. Herbert I. Levit

Dr. & Mrs.* Joseph A. Marasco, Jr.
The Estate of Jean L. Misner
Joseph M. Newcomer, Ph.D.
The Estate of Rose Noon
The Estate of Mr. Paul L. Pfennigwerth
The Pauline Beamer Pickens Charitable Trust
The Estate of Mr. Samuel R. Pitts
Mr. & Mrs. Stephen I. Richman
Mr. & Mrs. David M. Roderick
Mr. & Mrs. Vincent A. Sarni
Stanley Shostak
The Estate of Elizabeth A. Smith
The Stanier Family Charitable Remainder Trust
The Estate of Rudolf Stanish
The Estate of Cecyl M. Thaw
Ms. Gail Titus
The Estate of Helen F. Volkwein
The Estate of Betty & John Weiland
The Estate of David G. Weiss
The Estate of Kathleen & George R. White
Dr. & Mrs. Sidney K. Wolfson, Jr.
Ms. Patricia L. Wurster
The Estate of Rufus Wysor

*deceased

BOARD OF DIRECTORS

OFFICERS

MICHELE FABRIZI
Chair

GENE WELSH
President

ARTHUR J. KERR, JR.
Treasurer

MICHELE ATKINS
Secretary

CHRISTOPHER HAHN
General Director

EXECUTIVE COMMITTEE

James R. Agras
Nadine E. Bognar*
Kenneth S. Brand
Robert N. Brand
Marilyn Bruschi
Virginia DiPucci
Ann Dugan
Anna P. Futrell
Jean Anne Hattler, Ph.D.
Clyde B. Jones III
Richard A. Pagliari
Mary Anne Papale
Demetrios T. Patrinos
Diana Reid
Gene Sachs Smith
John E. Traina
Nancy Traina
H. Woodruff Turner, Esq.

BOARD OF DIRECTORS

David M. Belczyk, Esq.
François J. Bitz
Lisa M. Cibik, M.D.
Valerie Faeth, Esq.
Donald R. Fischer, M.D.
Frank McD. Fischer
Alexandra M. Good, Esq.
Natalie D. Hoffman
Sy Holzer
Robert A. James
Susan Loutsion
Jane Love
Robert A. Lowenstein, M.D.
Amy Michaliszyn
Abby Morrison
Steve Mosites, Jr.
Morgan K. O'Brien
Jill M. Ondos
Gabriela A. Porges
Mildred Miller Posvar
Jamy P. Rankin
Tony Rutigliano
Robert J. Sclabassi
Steven D. Seibert
David J. Smith
Hon. Manny H. Smith
Jack Stabile
Saundra Kiski Stout, Ph.D.
John Tippins
Stephen Totter

ADVISORY BOARD

James R. Agras
J. Alan Crittenden, Esq.
Enrico Dallavecchia
Franklin H. Kelly
Gloria Ley*
I. Hale Oliver
Stephen I. Richman, Esq.
David Savard
William M. Swartz, M.D.
Dorothea Thompson

GENERAL DIRECTOR EMERITUS

Tito Capobianco

LIFE DIRECTORS

Joseph A. Marasco, Jr., M.D.
Thomas H. O'Brien
Stanley Russell
Vincent A. Sarni
Joseph Vales

As of April 13, 2018

*deceased

GROUPS ATTENDING THESE PERFORMANCES

Audio Commentary
 California University
 Carlow University
 Carnegie Mellon University
 Carnegie Mellon University - Department of History
 Carnegie Mellon University Osher Lifelong Learning Institute
 Carnegie Museum of Natural History Supporters
 Chatham University
 Clarion University
 Duquesne University
 Duquesne University - Mary Pappert School of Music
 Duquesne University - Modern Languages and Literatures
 Geneva College
 George Washington Intermediate
 Google Pittsburgh
 La Scuola d'Italia Galileo Galilei
 LaRoche College
 Meet Up / Mark Freeman
 Mountaineer Catholic - WVU St. John University Parish
 Opera Connections
 Opera Opportunity
 PNC Wealth Management
 Point Park College
 Saint Vincent College
 Slippery Rock University
 Slippery Rock University Institute for Learning in Retirement
 Trinity Christian School
 Trinity High School
 Twenty-Something Tuesday
 University of Pittsburgh
 University of Pittsburgh Osher Lifelong Learning Institute
 Waynesburg University
 West Liberty University
 West Virginia University
 West Virginia University Osher Lifelong Learning Institute
 West Virginia University Retirees Association
 Western PA Blind Outdoor Leisure Development
 Winchester Thurston School
 Winthrop Management at the US Steel Tower
 Youngstown State University

As of April 13, 2018

If you are interested in bringing a group (6+) to a future performance, please e-mail groups@pittsburghopera.org or call 412-281-0912, ext. 213.

A Smile Says It All

Stephen M. Miller, D.M.D., M.A.G.D.
 Master of the Academy of General Dentistry



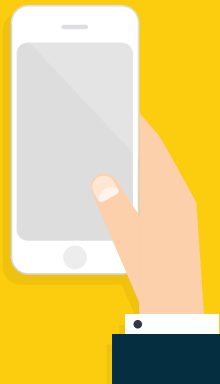
Stephen M. Miller, D.M.D., M.A.G.D.
 Complimentary consultation with playbill

3471 Fifth Avenue Suite 1114
 Pittsburgh, PA 15213
 412-681-7171

www.stephenmiller.com
frontdesk@stephenmiller.com

FOLLOW US online and download our free app!

Get breaking news, special offers, behind-the-scenes info, exclusive photos, trivia contests, and more!
 Available for and .



PITTSBURGHOPERA



MADAMA BUTTERFLY



HANSEL & GRETEL



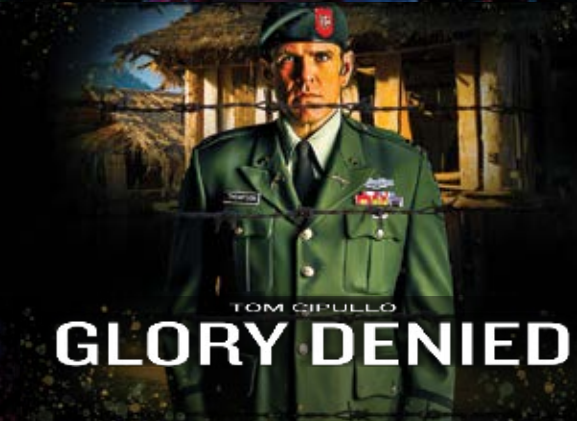
LA BOHÈME



DON PASQUALE



AFTERWARDS
 Mozart's IDOMENEO Reimagined



GLORY DENIED

PITTSBURGHOPERA

2018-19 SEASON

• Visit us in the Benedum Lobby TODAY to renew your subscription or to pick up your thank you gift made by Trello Cioccolato.

• Call us at 412-281-0912, Mon-Fri, 9:00-5:00, or visit pittsburghopera.org/renew. For questions, e-mail subscriptions@pittsburghopera.org

• Get additional performance info and download next season's audio recordings at pittsburghopera.org/season



Compose yourself with WQED-FM 89.3



From an exhilarating **overture** at the gym, to a quiet **adagio** by the fire, **WQED-FM 89.3** helps you **orchestrate** your life.

WQED-FM 89.3 is member supported. Join today at 888.622.1370.
Listen on your computer or mobile device at wqedfm.org



ANNUAL FUND LISTINGS

PAT AND MICHELE ATKINS AUDIENCE DEVELOPMENT FUND (2017-2021) (\$1,000,000+) Pat and Michele Atkins

EXECUTIVE PRODUCERS CIRCLE
Anonymous
Fund for New and Innovative
Programming and Productions

Ms. Michele Fabrizi
Dr. Freddie and Hilda Fu
The James E. and Sharon C.
Rohr Foundation

Steve and Gail Mosites
Mr. and Mrs. Demetrios T. Patrinos
David and Gabriela Porges
Diana Reid Chazaud

**INDIVIDUALS
CHAIRMAN'S SOCIETY
(\$50,000+)**
Michele and Pat Atkins
Mr. and Mrs. William F. Benter
Francois Bitz
Ms. Michele Fabrizi
Mr. and Mrs. Demetrios T. Patrinos
Gabriela and David Porges
Diana Reid & Marc Chazaud
Mr. and Mrs. John E. Traina

**PRESIDENT'S SOCIETY
(\$25,000-\$49,999)**
Dr. Lisa Cibik and Bernie Kobosky
Steve and Gail Mosites
Joseph M. Newcomer, Ph.D.
Mr. and Mrs. James E. Rohr
Arthur Weldon

**PRODUCERS CIRCLE
(\$10,000-\$24,999)**
James and Electra Agras
Edwin H. Beachler
Mrs. Nadine E. Bogner*
Mr. Kenneth S. Brand
Mr. and Mrs. Robert N. Brand
John and Virginia DiPucci
Dr. Donald R. and Nora Barry
Fischer
Hans and Leslie Fleischner
Dr. Freddie and Hilda Fu
Mrs. J. William Futrell
Dr. Jean Anne Hattler
Dr. and Mrs. William Hoffman
Mr. Arthur J. Kerr Jr.
Mr. and Mrs. R. Drew Kistler
Jane V. Love
Judith and Jim Matheny
Amy and Dave Michaliszyn
Ms. Abby L. Morrison
Perry* and Beejee Morrison
Lesla B. Morrison Ph.D.*
Mr. and Mrs. Maurice Nernberg
Hon. Manny and Ileana Smith
The Tippins Foundation
Gene Welsh and Mr. David
McAdams*

**DIRECTORS CIRCLE
(\$5,000-\$9,999)**
Barbara B. and Alan L. Ackerman
Dr. John C. Barber
Walter and Patti Blenko
Mr. and Mrs. Howard J. Bruschi

Mr. and Mrs. E. V. Clarke
Mr. and Mrs. James Dugan
Ms. Valerie Faeth
Mr. and Mrs. Henry J. Gailliot
William and Victoria Guy
Dr. Joseph and Marie Hinchliffe
Mr. Clyde B. Jones III
Mrs. Michael Kutsenkow
Dr. Arthur S. Levine and Ms. Linda
S. Melada
Dr. Michael Lewis and Dr. Katia
Sycara
Dr. Nicholas and Susan Loutsion
Stephen I. Richman
Robert J. and Sharon E. Scabassi
Steven D. Seibert
Mr. and Mrs. David J. Smith
Dr. Michael J. White and
Mr. Richard J. LeBeau
Dr. and Mrs. Mark Wholey

**ARTISTS CIRCLE
(\$3,000-\$4,999)**
Mr. and Mrs. Warren H. Bamford, Jr.
Marian and Bruce Block
Mr. and Mrs. Ross F. Dacal
George and Ada Davidson
Mr. and Mrs. Anthony DeArdo
Mr. Larry Deitch
Michelle Ann Duralia
Anthony and Carolyn Fonseca
Nachum Golan and Steve Hough
Dr. and Mrs. Sanford A. Gordon
Mr. and Mrs. Raymond G. Hasley
Mr. and Mrs. Joseph M. Jackovic
Alice Jane Jenkins
Mr. and Mrs. Franklin H. Kelly
William E. and Lucille Kenworthy
Michael and Kumiko Lancet
Marcia Landy and Stanley Shostak
Dr. and Mrs. Joseph Lenkey
Gene and Julia Leyzarovich
Dr. Etsuro K. and Mrs. Yoko
Motoyama
Mr. and Mrs. Eric J. Ondos
Lee Pavlovich
Dr. and Mrs. William R. Poller
Dr. Karen Roche and Dr. R. Kent
Galey
Victoria and George Rose
Dr. James R. Sahovey
Dr. Allan Segal and Mrs. Brina D.
Segal
Dr. and Mrs. Peter E. Sheptak
Mr. and Mrs. Stuart P. Simpson

Mrs. Edmund C. Smith
Dorothea Thompson
Jim and Gail Titus
Mr. H. Woodruff Turner
James Wiltman
Sidney and Tucky Wolfson
Mrs. Dorothea K. Zikos

**BENEFACTOR
(\$1,000-\$2,999)**
Anonymous
Phyllis Armstrong
David and Wendy Barenfeld
Richard C. Barney
Dr. Robert Bastress and Ms.
Barbara Evans Fleischauer
John Battaglia and M. Ellen Tarpey
Mrs. Martha Y. Berman
G. Andrew Bonnewell
Mr. and Mrs. David Brownlee
William R. Cadwell
Mr. and Mrs. Joseph L. Calihan Jr.
Susan Campbell and Patrick Curry
William R. Caroselli and Dusty Kirk
Chris and Maria Carson
Mr. and Mrs. Stephen Casey
Kenneth and Celia Christman
Mr. and Mrs. J. Alan Cope
Verna Corey, SCD
Dr. Robert J. Croan and Dr. R.
Michael Feldman
Eugene and Katrin Engels
Mr. and Mrs. David F. Figgins
Trudy File
Marian Finegold
Bill Foster
Alice V. Gelormino
Cindy and Murry Gerber
Ann K. Giorgi
Franklyn and Dale Gorell
Laurie Graham
Mr. Christopher Hahn
Ms. Beatrice Irminger
Ms. Anne Jackovic
Roberta Klatzky and Robert
Swendsen
Dr. Andrew Sword and Dr. Marta
Kolthoff
Ron and Lida Larsen
Lutz Family Foundation
Dr. Joseph A. Marasco, Jr.
Elizabeth R. Mertz
Mr. and Mrs. Albert C. Mue
Linda Natho and Elizabeth Russell
Dr. Ronald J. Nigborowicz

MOSCOW on the Bluff

David Allen Wehr, Artistic Director

The Mary Pappert School of Music presents
Moscow on the Bluff, five Sunday afternoon
concerts of Russian music.

July 29, 2018

Season tickets on sale June 18
Single concert tickets on sale July 2

September 9, 2018

For more information,
visit duq.edu/BluffSeries
or call 412.396.6083.

September 23, 2018

January 20, 2019



Mary Pappert
School of Music

March 3, 2019



Mr. and Mrs. Willie M. Owens
 Mary Anne and Victor Papale
 Mrs. Pauline R. Parker
 Drs. James Parrish & Christiane Siewers
 Mr. and Mrs. Robert N. Peirce, Jr.
 Mrs. Mildred M. Posvar
 Robert and Jamy Rankin
 Donald Rasely
 Patrick W. Ritchey, Esq.
 Mrs. Sandra B. Rogers
 Dan and Bonnie Sandman
 Mr. and Mrs. Stephen Shaner
 Dr. Paul L. Shay and Dr. Diana Lemley
 Mark and Ellen Sheppard
 Mr. and Mrs. Richard P. Simmons
 Ambassador and Mrs. Daniel H. Simpson
 Mr. and Mrs. W. Henry Snyder
 Dr. and Mrs. Edward M. Sorr
 Rob and Janet Squires
 Ann Labounsky Steele and Lewis Steele
 Mr. and Mrs. Norman Stephen
 Mr. and Mrs. Thomas C. Succop
 Margaret Tarpey and Bruce Freeman
 Stephen Totter
 Mr. and Mrs. John A. Wall
 Phillips Wedemeyer and Jeanne Hanchett
 Sheila and Bernard Werner
 Mr. Norman H. Wien
 Mr. Jeffrey Wigton
 Brandon and Maria Williams
 Izear Winfrey
 Judith L. Wolfe and John H. Soffietti
 Dr. and Mrs. David S. Zorub

**PATRON
 (\$500-\$999)**

Anonymous
 Barbara Abraham
 Dr. Lawrence N. Adler and Ms. Judith Brody
 Dr. and Mrs. Alan J. Barnett
 Dr. John and Dr. Valentina Barsom
 Mr. and Mrs. Benno A. Bernt
 Ms. Eva Tansky Blum
 Carol R. Brown
 Leah and William G. Buchanan
 Frank and Diane Burke
 Dr. Raymond A. Capone, Jr. and Dr. Martha R. Clarke
 Mr. Michael G. Connelly
 Gail E. Cooper
 Ms. Catherine Copetas
 Susan Cramer
 Mr. J. Alan Crittenden
 Ms. Catherine Davidson
 Mr. Edward DePersis
 Judge Richard and Joan DiSalle
 Michel and Christine Douglas
 Leslie Dunn
 Don and Joan Franklin
 Ms. Normandie Fulson
 Mrs. Elaine M. Goldsmith
 Nancy and David Green

Dr. and Mrs. Adam W. Hahn
 Roger Hendrix and Susan Godfrey
 Mr. and Mrs. David G. Hills
 Mr. Daniel Iddings
 Mrs. Diana Janetta
 David and Daryl Kerr
 Don Kortlandt and Anna Singer
 Drs. Frank and Patricia Kroboth
 Alice and Lewis Kuller
 Dr. and Mrs. Walter C. Labys
 Nancy Langston
 Mr. and Mrs. Michael Levine
 Dr. and Mrs. Claudio A. Lima
 Catherine and Mark H. Loevner
 Ms. Arlene J. Longstreth
 Dr. Keith McDuffie
 Mr. and Mrs. Stephen H. McKnight
 Mr. Oded Meyer
 David and Chris Michelmore
 Dr. Charles Jay Miller
 Marlee and James Myers
 Dr. and Mrs. Sang C. Park
 Larry Parsons and Sarah Carr
 Eric and Sharon Perelman
 Mr. William Phelan
 Mr. and Mrs. Robert Pietandrea
 Dr. and Mrs. Richard H. Pratt
 Mr. Michael O. Ranney and Mr. Greg Nutter
 Dr. Joseph* and Rose Kunkel
 Roarty
 Sanford N. and Judith Robinson
 Family Foundation
 Ms. Janice G. Rosenberg
 Caryn B. Rubinoff and Craig A. Dunham
 Mrs. John M. Sadler
 David M. Savard
 Ms. Joliane K. Schroeder
 Mr. and Mrs. Preston W. Shimer
 Marjorie K. Silverman
 Mrs. Mervin S. Stewart
 Mr. & Mrs. John Sylvester
 Dr. Bonnie B. Thurston
 John and Linda Vuono
 Mr. and Mrs. Robert K. Wagner
 Ms. Ruth Wagner
 Nancy and Joel Weinstein
 Frank and Heidemarie Wenzel
 Mr. Norman H. Wien
 Mr. Jeffrey Wigton
 Izear Winfrey
 Alice C. Young

**SPONSOR
 (\$300-\$499)**

Anonymous
 Dr. and Mrs. Siamak A. Adibi
 Dr. and Mrs. Theodore S. Andersen
 Paul and Valerie Bacharach
 Ms. Lorraine Balun
 Mr. Scott Bell and Mr. Larry Allen
 Don and Sue Bialostosky
 Mr. and Mrs. Arthur V. Bianculli
 Drs. Albert and Barbara Biglan
 Dr. Robert J. and Marcelia Boldin
 Hugh and Jean Brannan
 Frank and Laurie Bruns
 Mr. John Carson
 Dr. and Mrs. Louis W. Catalano, Jr.

Mr. R Peterson Chalfant
 Sue Challinor and Matthew Teplitz
 Mr. Robert D. Ciardi
 Ms. Donna Close
 Gail and Ramsey Coates
 Mr. James Colker
 Kevin and Sharon Deacon
 Christopher M. Evans
 Mr. and Mrs. James Fabert
 Mr. and Mrs. Frank Fazio
 Dr. and Mrs. Robert E. Fidoten
 Mr. and Mrs. Frank McD. Fischer
 Patricia A. Flinn
 Mr. Carl B. Frankel
 Nancy W. Galm
 Joan and Stuart Gaul
 Mrs. Coar A. Gebhardt
 Mr. Clement George
 John and Victoria Gibbons
 Mr. and Mrs. Lawrence E. Gorman
 Dr. Terri F. Gould
 Ms. Denise Gwinn
 Dr. and Mrs. Fred P. Heidenreich
 Mr. and Mrs. Philo Holcomb III
 Dr. and Mrs. Albert Jellen
 Diane and Howard Jernigan
 Mrs. Amy Kellman
 Mr. and Mrs. Charles King
 Dr. Paul J. Lebovitz and Mr. Mark J. Caldone
 Nancy J. Lynchs
 Mr. and Mrs. Robert Malnati
 Dr. Kenneth Manders
 Mr. John A. Martine
 Sally and Bennett McCallum
 Mr. and Mrs. Dennis McNair
 Ms. Carol W. Mohamed
 Rev. and Mrs. Robert J. Newpher
 Mr. John Pastin
 Jon and Melissa Piersol
 Mr. and Mrs. Mark R. Prus
 Teresa and George Roland
 Howard and Bette Rom
 Mr. and Mrs. Byron W. Rosener III
 Ms. Karen Scansaroli
 Mr. and Mrs. Walter Schrage
 Ms. Carolyn L. Siglow
 Dr. and Mrs. Leon Skolnick
 Mr. Richard A. Sundra
 William and Elizabeth Teaff
 Rev. James Torquato
 Veronica and Phillip Kearns
 Jim and Jill West
 Sandra and Frank Williamson

**FRIEND
 (\$100-\$299)**

Suhail Abboushi
 John Aiello
 Mrs. James S. Allan
 Grant and Barbara Anderson
 Mrs. Anna Antemann
 Dr. and Mrs. Robert P. Argentine, Jr.
 Jane C. Arkus
 Mr. James R. Atwell
 Dr. Carol E. Baker and Dr. Iain Campbell
 Dr. Byron Ballou
 Linda Bamberg
 Gari Anne Banks

Ms. Barbara L. Barry
 Donna S. Baumgarten
 W. J. Beitler
 Mr. and Mrs. Robert Bencivenga
 Dr. and Mrs. Thomas Benedek
 Dr. Elizabeth Bennett
 Mr. and Mrs. Lester Berkowitz
 Diane L. Berman
 Mr. Allen Biehler
 Mr. Peter Billey
 Ms. Mary Bober
 Robert Boldin
 Dr. and Mrs. Carlos A. Borzutzky
 Dorothy L. Boyer
 Robert and Kathleen Boykin
 Carol and Jack Brinjak
 Ms. Lois Bron
 Mrs. Ellen Still Brooks
 Arnold Broudy
 Marcia Broughton
 Dr. Michael Burkitt
 Michael F. Butler
 Ms. Marjorie Cain
 Mr. Andrew Carlsson
 Mr. Patrick Cassidy
 Dr. Richard Becherer and Dr. Charlene Castellano
 Melinda Cavis
 Mr. William Ceriani
 Gerald and Barbara Chotiner
 Albert and Cynthia Chung
 Mary Cola
 Ms. Barbara Clawson
 Rosemary K. Coffey
 Ms. Rosa Colucci
 John Conti
 Harry and Florence Corbett
 Mr. and Mrs. Nelson Craig
 Gordon and Linda Crocker
 Richard and Suzanne Currie
 Mr. Sabah Daniel
 Ms. Catherine Davidson
 Kathryn Albers and Brian Davis
 Glenn and Mary Beth Deemer
 Mrs. Sylvia DeMarco
 Dennis and Kim DiPerna
 Mr. Hal Dixler
 Jean and Trafford L-M. Doherty
 Mr. and Mrs. Hugh S. Downing
 Mr. R.D. Duncan
 Ms. Christine L. Dvonch
 Helen and Richard Edgington
 Mr. Frank Edwards
 Mary Jane Edwards
 Dr. Peggy H. Elkus
 Kathleen Emmer
 Gloria and Bob Ennis
 Drs. Anna M. Estop and James J. Garver
 Arthur and Betty Evans
 Lucio and Frauke Facchini
 Ms. Hilka I Fadgen
 Jules J. Feldman
 Mr. Philip Ferland
 Gregory Fisher
 Mr. and Mrs. James A. Fisher
 Chris and Elaine Forbes
 Christopher Fox and Shaun Tomaszewski
 Mr. Kenneth T. Frankenbery
 John and Susan Frantz

Joyce Fu and Chad Martin
 Mrs. Diana Galbraith
 Mr. and Mrs. William P. Getty
 Mr. and Mrs. William D. Ghrist, III
 Mr. Paul J. Gitnik
 Mr.* and Mrs. Harry M. Goern
 Mr. Michael F. Golde
 Mr. and Mrs. Paul Golebie
 Roz Goorin
 Ms. Mary Lynn Gras
 Ms. Michelle G. Gray-Schaffer
 Lori Greene and Chris Decker
 Andrea and M. Grennan
 Ms. Elizabeth A. Gundelfinger
 Kenneth Hance and Kamer Davis
 Dr. Barbara M. Harley
 Mr. Michael Harr
 Ms. Evelyn Harris
 Mr. Gordon Haw
 Mr. and Mrs. Gunther Heilbrunn
 Mr. and Mrs. Mark Heine
 Professor Benjamin E. Hicks
 Clifton and Rose Mary Highman
 Dr. and Mrs. Elias Hilal
 Mr. and Mrs. Robert D. Hillard
 Edwin and Rhonda Holland
 Katherine Holter
 Ms. Margaret Hong-Barco
 Mr. and Mrs. Robert Horowitz
 Dr. and Mrs. Jno L. Hunt
 Anthony C. Infanti and Hien D. Ma
 Mr. John Iurlano
 Mr. and Mrs. Ted K. Jacob
 Charles R. Jefferson and Cynthia A. D'Agostino
 Mr. and Mrs. Michael J. Kakos
 Ms. Amy Rose Kamin
 Mr. and Mrs. Robert S. Kamin
 Gretchen and Robert Kelly
 Mr. and Mrs. John E. Kennedy
 Mr. and Mrs. Joseph Kenney
 Dr. Gauri Kiefer
 Mr. Milton B. Kimura
 Mr. and Mrs. Jack King
 Edward Kocher and Kamie Schoonhoven
 Peter Kogan and Elinor Nathanson
 Roberta and David Konefal-Shaer
 Ms. Ethel Koudela
 William and Kathryn Kress
 Drs. Frank and Patricia Kroboth
 Joseph and Carole Ladik
 Mr. Leonard LaForgia
 J. Andrew Lark
 Mr. and Mrs. Mark J. Laskow
 Mr. and Mrs. Edward A. Lesser
 Dr. David J. Levenson and Ms. Debra L. Caplan
 Mr. Robert Lewis
 Mr. Gregory M. Liberi
 Margery J. Loevner
 Mr. and Mrs. Russell Long
 Mr. and Mrs. Frank Lowenstein
 Mr. Henry J. Mader
 Louise and Michael Malakoff
 Beverly Weiss Manne and Jason Manne
 Mr. and Mrs. Joseph Marotta
 Chris and Susan Martin
 Linda Martin and Noel Walkington
 Mr. E. MacDonald Matter

Prof. and Mrs. Krzysztof M. Matyjaszewski
 Ms. Rosemarie Mazza
 J. Barbara Mckelway
 Kevin and Kristen McMahan
 Sally McVeigh
 Mr. and Mrs. John E. Mehl
 Mrs. Helen G. Mellott
 Ms. Shirley Menovich
 Stephen and Erica Miller
 Drs. Ricardo G. Gray-Schaffer
 Lori Greene and Chris Decker
 Andrea and M. Grennan
 Ms. Elizabeth A. Gundelfinger
 Kenneth Hance and Kamer Davis
 Dr. Barbara M. Harley
 Mr. Michael Harr
 Ms. Evelyn Harris
 Mr. Gordon Haw
 Mr. and Mrs. Gunther Heilbrunn
 Mr. and Mrs. Mark Heine
 Professor Benjamin E. Hicks
 Clifton and Rose Mary Highman
 Dr. and Mrs. Elias Hilal
 Mr. and Mrs. Robert D. Hillard
 Edwin and Rhonda Holland
 Katherine Holter
 Ms. Margaret Hong-Barco
 Mr. and Mrs. Robert Horowitz
 Dr. and Mrs. Jno L. Hunt
 Anthony C. Infanti and Hien D. Ma
 Mr. John Iurlano
 Mr. and Mrs. Ted K. Jacob
 Charles R. Jefferson and Cynthia A. D'Agostino
 Mr. and Mrs. Michael J. Kakos
 Ms. Amy Rose Kamin
 Mr. and Mrs. Robert S. Kamin
 Gretchen and Robert Kelly
 Mr. and Mrs. John E. Kennedy
 Mr. and Mrs. Joseph Kenney
 Dr. Gauri Kiefer
 Mr. Milton B. Kimura
 Mr. and Mrs. Jack King
 Edward Kocher and Kamie Schoonhoven
 Peter Kogan and Elinor Nathanson
 Roberta and David Konefal-Shaer
 Ms. Ethel Koudela
 William and Kathryn Kress
 Drs. Frank and Patricia Kroboth
 Joseph and Carole Ladik
 Mr. Leonard LaForgia
 J. Andrew Lark
 Mr. and Mrs. Mark J. Laskow
 Mr. and Mrs. Edward A. Lesser
 Dr. David J. Levenson and Ms. Debra L. Caplan
 Mr. Robert Lewis
 Mr. Gregory M. Liberi
 Margery J. Loevner
 Mr. and Mrs. Russell Long
 Mr. and Mrs. Frank Lowenstein
 Mr. Henry J. Mader
 Louise and Michael Malakoff
 Beverly Weiss Manne and Jason Manne
 Mr. and Mrs. Joseph Marotta
 Chris and Susan Martin
 Linda Martin and Noel Walkington
 Mr. E. MacDonald Matter

Dr. and Mrs. Morton Seltman
Pushpendra and Diana Senan
Mr. and Mrs. John E. Sensi
Robert Shankovich
Richard F. and Linda W. Shaw
Edward P. and Betty A. Shelley
Mr. and Mrs. Isadore Shrensky
Ms. Joan Siebart
Mrs. Susan Signore-Smith
Edward and Dorothy Sites
Mr. and Mrs. George Skinner
Father John W. Skirtich
Elaine Small
Martha and Phillip Smith
Ms. Marlene Smith
Ronald F. Smutny
Mrs. Theresa V. Snavely
Deanne Snavely
Celia Soehner
David Sogg and Lisa Parker
Stephen Sparks
Mr. Benjamin Speiser and
Ms. Valentina Vavasis
Rob and Janet Squires
Mr. and Mrs. James M. Stark
Dr. Vilja K. Stein
Mary Jean Stephen
LaDorna Stephens
Ms. Hazel Stone
Mr. and Mrs. Charles J. Streiff
Dr. and Mrs. C. Vaughn Strimlan
Ms. Beverly Sullivan
Rachel and Lowell Swarts
Mr. and Mrs. Robert Thomas
Mr. and Mrs. Sol Toder
Mr. and Mrs. George Trapp
Mr. Mark W. Trawka
James Gorton and Gretchen Van
Hoesen
Mrs. Janet Verone
Anthony and Eva Vitullo
Louis and Mary Wagner
Dr. Janet Lois Walker
Mr. Robert T. Wargo
Marvin Wedeen
Ms. Eileen J Weiner
Bob Gorby and Barb Weizenbaum
Lane Wilson
Grant C. Wilson
Drs. Todd Witsberger and
Kathleen Bors
David and Diana Marston Wood
Dorothy Wriedt
John W. Wyllie, MD
Mr. Lawrence Yagoda
Ms. Rosemarie Zenone

**CORPORATIONS:
Season Sponsor**
PNC

Tuesday night sponsor
Ambridge Regional Distribution
and Manufacturing Center

**Corporate Education and
Engagement 2017-18**
American Eagle Outfitters
Davis Vision
Dollar Bank

EQT Foundation
First Commonwealth Bank
Hefren-Tillotson, Inc.
Highmark Blue Cross Blue Shield
Levin Furniture
The Huntington National Bank
Triangle Tech
UPMC and UPMC Health Plan

In-kind
Sarris Candies
Trello Cioccolato

**2017 Diamond Horseshoe
Ball Premier Sponsor**
UPMC and UPMC Health Plan

**2017 Diamond Horseshoe
Ball Sponsors**
Ambridge Regional Distribution
and Manufacturing Center
Children's Hospital Foundation
Highmark Blue Cross Blue Shield
MARC USA
Pittsburgh Penguins Foundation
PJ Dick Trumbull Lindy Paving
PNC
Sarris Candies
UPMC and UPMC Health Plan
Williams Companies

CORPORATE PARTNERS 17-18
Alco Parking
Ambridge Regional Distribution
and Manufacturing Center
Clearview Federal Credit Union
Eat'n Park Hospitality Group, Inc.
Federated Investors, Inc.
Flaherty & O'Hara, P.C.
Giant Eagle Foundation
Highmark Blue Cross Blue Shield
Kerr Engineered Sales
Koppers, Inc.
PNC
Spang and Company Charitable
Trust
Vincent Lighting Systems
Williams Companies
Xpyria Investment Advisors

MATCHING GIFTS
Broadbridge
ConocoPhillips
EQT Foundation
Highmark Blue Cross Blue Shield
Williams Companies

FOUNDATIONS:
Anonymous
G. Christian Lantzsich Foundation
The Pittsburgh Foundation
The Allegheny Foundation
Anna L. and Benjamin Perlow Fund
Claude Worthington Benedum
Foundation
The Benter Foundation
The Frick Fund of the Buhl
Foundation
The Alice M. Ditsen Fund of
Columbia University

Eden Hall Foundation
The Ethel W. Keister Music Fund of
the Pittsburgh Foundation
The Ethel W. Keister Scholarship
Endowment
Fair Oaks Foundation, Inc.
Fine Family Foundation
Frances Gould Lewando Memorial
Fund
The Grable Foundation
The Heinz Endowments
Hilda M. Willis Foundation
The Jack Buncher Foundation
James M. and Lucy K. Schoonmaker
Foundation
Milton G. Hulme Charitable
Foundation
Pauline Pickens Fund of The
Pittsburgh Foundation
Richard King Mellon Foundation
Donald & Sylvia Robinson Family
Foundation
Ryan Memorial Foundation
W.I. Patterson Charitable Fund

GOVERNMENT AGENCIES:
Allegheny County Office of
Special Events
Allegheny Regional Asset District
National Endowment for the Arts
Pennsylvania Department of
Education
Pennsylvania Council on the Arts

OLGA BARRY FUND:
Dr. Donald R. and Nora Barry
Fischer

IN HONOR OF:
Joseph and Sadie Aquilino
Network for Good

Michele and Patrick Atkins
Honorable and Mrs. William
Kentworthy

Dolores Barber Smith*
Ms. Joan Siebart

Dolores Barber Smith's birthday
Mr. and Mrs. Charles D. Horne Dr.
Nicholas and Susan Loutsion

Rose Black
Mr. and Mrs. Michael J. Kakos

Ron Booth
Dr. Gauri Kiefer

Kathleen Butera
Dr. Robert Shankovich

Diana Reid and Marc Chazaud
Mrs. Diana Janetta

Christian Cox and Emily Hughes
Michele and Pat Atkins

Virginia DiPucci
Nancy Langston

Hale and Judy Oliver and Virginia
and John DiPucci
Mrs. Nancy C. Langston

Brian Doherty
Jean and Trafford L-M. Doherty

Marilyn Egan
Anonymous

Dr. and Mrs. Freddie Fu
Mrs. Lois Bron

Annie Futrell's birthday
Dorothy L. Boyer

Alice Jane Jenkins
Ms. Joliane K. Schroeder

Alex Loutsion
Michele and Pat Atkins

Jane Fay Miller
Kitty Telep

Resident Artists Program and
FRIENDS of Pittsburgh Opera
Mr. Ronald F. Smutny

Steve Seibert
Ms. Kelsey M. Patsch

Norman Weizenbaum
Barbara Weizenbaum

David Zorub, Pittsburgh Opera
Supernumerary
Gordon and Linda Crocker

IN MEMORY OF:
Dolores Smith Barber
Mr. and Mrs. James R. Agrad
Mr. and Mrs. James Bischoff
Mr. and Mrs. Howard J. Bruschi
Mr. and Mrs. Gordon Crocker
Drs. Karen and R. Kent Galey
Mr. Arthur J. Kerr Jr.
Dr. Joseph A. Marasco, Jr.
Mr. and Mrs. Stuart P. Simpson
Mr. and Mrs. Gordon Crocker
Mr. and Mrs. James R. Agrad
Drs. Albert and Barbara Biglan
Dr. and Mrs. John N. DiPucci
Mr. and Mrs. David F. Figgins
Mr. and Mrs. Frank M. Fischer
Mr. Paul J. Gitnik
Mrs. Harry M. Goern
Mr. Arthur J. Kerr Jr.
Dr. Michael Lewis and Dr. Katia Sycara
Mr. and Mrs. Stanley G. Russell, Jr.
The Sewickley Music Club
Dr. and Mrs. Peter E. Sheptak
Ms. Joan Siebart
Mrs. Gerald L. Thompson
Mr. and Mrs. John E. Traina
Mr. H. Woodruff Turner

Olga G. Barry
Adam Fischer
Fred Vrbanic and Jean Bencivenga
Broadridge Matching Gift Program

Nadine Bogner
Dr. and Mrs. John C. Barber
Margaret Broesicke
Mr. and Mrs. Howard J. Bruschi
Mr. and Mrs. John N. DiPucci
Dr. Donald R. Fischer and Honorable
Nora Barry Fischer
Mr. and Mrs. Frank M. Fischer
Ms. Lori Greene and Mr. Chris Decker
Mr. Arthur J. Kerr Jr.
Dr. Joseph A. Marasco, Jr.
Honorable Manny and Ileana Smith
Mr. and Mrs. John E. Traina
Mr. H. Woodruff Turner

David Buchta
Dr. Michael Lewis and Dr. Katia Sycara

Donna L. Carlsson
Linda Bryce

Frank P. DeMarco
Mrs. Sylvia DeMarco

Pasquale DiSalle and Assunta DiSalle
The Honorable and Mrs. Richard
DiSalle

Albert Filoni
Mr. and Mrs. Gordon Crocker
Ms. Joan Miller Moran

George and Iris Flinn
Ms. Patricia A. Flinn

Kenneth R. Hunt
Mr. Gary F. Shaffer

Marshall Katz
Ms. Barbara L. Barry
Mrs. Nadine E. Bogner*
Mr. and Mrs. Robert N. Brand
Mrs. Ellen S. Brooks
Mr. and Mrs. Howard J. Bruschi
Gennaro DiBello
Mrs. Edith H. Fisher
Ms. Amy R. Kamin
Ms. Margery J. Loevner
Mr. and Mrs. Mark H. Loevner
Dr. and Mrs. David Neuschwander
Ms. Caitlin Randall
Mr. and Mrs. Howard M. Rom
Dr. and Mrs. Peter E. Sheptak
Honorable Manny and Ileana Smith
Mr. H. Woodruff Turner

Maria Levy
Mr. and Mrs. Frank M. Fischer

George Ley
Mr. and Mrs. David F. Figgins

Lorenzo Malfatti
Mr. and Ms. Allan R. Mosher

Patricia A. Mogus
Mr. and Mrs. John Brinjak

Lesa B. Morrison
Ms. Abby L. Morrison

William and Edith Polifroni
Mrs. Mary Cicola

Cornelius Rifugiato
Mr. Edward DePersis

Robert W. Sawyer
Mrs. Joanne Sawyer

Mary Virginia Shaw
Mrs. Leslie A. Joyce

Alphone A. Siglow
Ms. Carolyn L. Siglow

Arthur Small
Ms. Elaine Small

Mervin S. Stewart, MD
Mrs. Marcia M. Stewart

Patricia Sundra
Mr. Richard A. Sundra

Mary Turner
Mr. and Mrs. Wiegand

Carl and Rose Vuono
Mr. Richard Reed

Dorothy Wagner
Ms. Deborah Beech
Ms. Michelle Brendel
Mr. and Mrs. Paul Budziszewski
Mr. and Mrs. Henry D. Monsch Jr.
Denise Shipe
Mr. and Mrs. Daniel Tewell
Gerald Wilmot
Mr. Ronald Wolk

Bernard Werner
Mr. and Mrs. Robert N. Brand
Honorable Manny and Ileana Smith
Mrs. Bernard Werner

Mildred "Millie" Zellmer
Mr. and Mrs. Gordon Crocker

As of April 5, 2018
* deceased

**We make every attempt to
provide an accurate and current
list of donations. If you find
an error, please contact the
Development Department at
412-281-0912, ext. 259.**

Thank You!
As a Resident Company at the Benedum
Center, Pittsburgh Opera gratefully
acknowledges the contribution that
the PITTSBURGH CULTURAL TRUST
makes to our organization by renting us
performance space at preferred rates.

MAECENAS XXXIV
Cirque de l'Opéra

Peoples - Institutional Chair
Honoring

THE HONORABLE TOM WOLF
 GOVERNOR OF THE COMMONWEALTH OF PENNSYLVANIA

• Lifetime Achievement Award •

MICHELE AND PAT ATKINS

• Maecenas Award •

SATURDAY, MAY 12, 2018

Pittsburgh Opera Headquarters
 2425 Liberty Avenue • Pittsburgh, Pennsylvania 15222

pittsburghopera.org/maecenas or 412-281-0912, ext. 225.

PITTSBURGH OPERA
Inspire a lifetime of memories



Photo: David Bachman

Soaring voices. Epic love stories. Sets evoking faraway places.
 Opera's timeless thrills can spark an enduring passion in a person's life. Please make a special gift to the Annual Fund. Who might you inspire?

Give today at pittsburghopera.org or 412-281-0912, ext. 231.

CULTURAL
 DISTRICT

YOUR AUDIENCE AWAITS!

Why advertise in the Cultural District?

You'll be in good company. Your program ad shares the excitement of a live arts event. It's visible, attractive.

You'll truly connect with customers. District audiences carry programs home as keepsakes. They're loyal to their arts groups and those that support them. Friends buy from friends.

You can target your audience and solidify your brand. With the extraordinary range of programming, you can have visibility year-round or for specific events or dates.

It's easy and affordable. Just one call to the Cultural District advertising sales office provides custom ad campaigns, multiple ad discounting, and one-contract billing.

Every year, the District attracts more than two million people to over 4,500 events for unforgettable experiences.

Call 412.471.1497 or email advertising@culturaldistrict.org today!

PITTSBURGH OPERA ORCHESTRA

VIOLIN I

Charles Stegeman
Concertmaster
Rachel Stegeman
Assistant Concertmaster
Kate M. Black
Jennifer Madge
Dawn Posey
Anne Moskal
Rachel White
Rochelle Agnew

VIOLIN II

Raymond Eichenmuller
Principal 2nd Violin
Mary Beth Schotting
Sara Schaft
Larry Yagello
Jami Bale
Joan Zerkowicz
Jennifer Cowles

VIOLA

Jennifer Gerhard
Principal
John McCarthy
Louise Farbman
Rebecca Rothermel
Jason Hohn

CELLO

Kathleen Melucci
Principal
Paula Tuttle
Paul Critser
Joseph Bishkoff, Jr.
Freya Samuels

BASS

Jeffrey T. Mangone, Sr.
Principal
Andrew Kohn
Robert J. Skavronski

FLUTE

Barbara O'Brien
Principal
Beverly Crawford

PICCOLO

Beverly Crawford

OBOE

Robert Driscoll, Jr.
Principal
Cynthia Anderson

CLARINET

Mary Beth Skaggs Malek
Principal
Roi Mezare

BASSOON

Linda Morton Fisher
Principal
Don Hollis

HORN

Evan Geiger
Principal
Matthew Litterini

TRUMPET

Christopher Wilson
Principal
Karen Lee Sloneker

TROMBONE

John Sebastian Vera
Principal
Michael Engstrom

BASS TROMBONE

Glenn Wayland

HARP

Natalie Severson
Acting Principal

PERCUSSION

Jan Fung
Principal
Albert Wrublesky

TIMPANI

John Dilanni
Principal

PIANO CONTINUO

James Lesniak

BANDA

Shawn Wilson, Trumpet
Philip VanOuse, Tuba
Principal
Glenn Lewis, Piano

LIBRARIAN

Eleanor Cameron

PERSONNEL MANAGER

Robert Boldin

The orchestra musicians employed in this production are members of the American Federation of Musicians of the United States and Canada.

CHORUS AND SUPERNUMERARIES

SOPRANO

Charlene Canty
Stacey Brett Conner
Kathryn Copeland Donaldson
Christiana Howell
Judith Jenkins
Sasha Piastro-Tedford
Katy Shackleton-Williams

ALTO

Patricia Donohue
Janice Garrone
Kymberly Anne Laret
Barbara McDonough
Eva Rainforth
Veronika Schmidt
Kathryn Ambrose Sereno

TENOR

Kevin Adamik
William Buchanan
Brian Doherty
Jeffrey Link
Richard Mikol
Edward Moore
David Scoville
Rich Williams

BASS

Peter Bianchi
Scott Cuva
Jesse Davis
Todd Farwell
Nicholas Kochanov
J. Patrick McGill
Joshua Mulkey
Jordan Rininger

SUPERNUMERARIES

Pedro Sanvicente Amor
Charlie Anderson
Josh Baringer
JR Graff
William Ivins
Martin Richter
John Sallo

COVER FOR DULCAMARA'S ASSISTANT

Harrison Salvi

The Principal Artists, Choristers, and Production Staff employed in this production are members of the American Guild of Musical Artists.



PNME
Pittsburgh
new music
ensemble
Theatre of Music

July 6-7
3 World Premieres
by Rufus Reid, JungYoon Wie, and David Biedenbender!

July 13-14
2 World Premieres
by D. J. Sparr / Caitlin Vincent and Ivette Herryman; ft. visual art!

July 20-21
Soprano Showcase
Join resident soprano Lindsay Kesselman on a stunning vocal journey!

July 27-28
The Gray Cat and the Flounder
An immersive theatre experience exploring love, loss, and friendship!

"The best show of any kind I have ever experienced."
Join us for our 2018 concert season; Your first concert is free! Use code "PghOp" at PNME.org for 20% off!

VOLKWEIN'S MUSIC

STUDENTS

PROFESSIONALS

MUSIC ENTHUSIASTS

WHERE MUSICIANS GO

FOR INSPIRATION

INSTRUMENT RENTALS ~ INSTRUMENT REPAIRS

NEW INSTRUMENTS ~ USED INSTRUMENTS ~ SHEET MUSIC ~ ACCESSORIES

VOLKWEINSMUSIC.COM

138 INDUSTRY DRIVE ~ PITTSBURGH PA 15275 ~ 800.553.8742 ~ 412.788.5900

JACK DIANNI ~ PRESIDENT, VOLKWEIN'S MUSIC ~ TIMPANIST, PITTSBURGH OPERA ORCHESTRA

**Supporting Performing Arts
throughout Pittsburgh**



You name it... We shoot it!

**Randy & Barbara Griffith
412-304-9466**

**The Official Video Archivist
for Pittsburgh Opera**

PITTSBURGH OPERA



Join the Pittsburgh Opera New Guard and experience everything Pittsburgh Opera has to offer!
THE NEW GUARD is a community for young professionals, ages 21-40, who have a passion for Pittsburgh Opera.

pittsburghopera.org/newguard or 412-281-0912, ext. 225.



Ambridge Regional

Distribution & Manufacturing Center

SPACE FOR LEASE

www.AmbridgeRegional.com



Commercial Real Estate in Beaver County

85 acres and over 1 million square feet

Warehouse, Distribution, Manufacturing, Office & Yard options



Rail Served by Norfolk Southern & 7 Rail Spurs On Site

800.371.5605 | info@ambridgeregional.com

PITTSBURGH OPERA STAFF AND VOLUNTEERS

CHRISTOPHER HAHN
General Director

ANTONY WALKER
Music Director

ADMINISTRATION
Kristin N. Gatch
Assistant to the General Director
and Board Liaison

Susan Solito
Office Manager and Ticketing Associate

ARTISTIC
William J. Powers
Director of Administration and
Artistic Operations

Robert Boldin
Manager of Artistic Administration

Glenn Lewis
Head of Music

Mark Trawka
Director of Musical Studies/
Chorus Master

James Lesniak
Associate Coach/Pianist

Amy Kellman
Artistic Volunteer

FACILITIES
Emily Grand
Manager of Operations and Resident Artist Program

Sean Holsing
Operations Coordinator

DEVELOPMENT
Kathleen Butera
Director of Development

Holly Ricciuti
Associate Director of Development

Hyla Urbany
Manager of Corporate Development

Ronna Pratt
Special Events Manager

Martina Caruso
Individual Giving and Data Associate

Julia Leyzarovich
Manager of Institutional Giving

FINANCE
Robert Rak
Director of Finance

Howard Austin
Finance Manager/Human Resources

Denka Stavreva
Accounts Payable

MUSIC LIBRARY
Eleanor Cameron
Orchestra Librarian

ARCHIVES
Frank McD. Fischer
Company Archivist

EDUCATION
Marilyn Michalka Egan, Ph.D.
Director of Education

Mary Ann Graziano
Jan Ban
Ray Beard
Julia Fennell
Donna Priore
Audio Commentary Team

Lydia Halkias
Braná Hill
Education Interns

Ray Beard
Jacqueline Bezek
Alex Blue
Athena Bober
Rachelle Brick
Carol and Jack Brinjak
Randy Broker
Lili Cai
Debra Calise
Brianna Cassidy
Anne Christianson
Lia Christulides
Maureen Cirocco
Susan Fair
Trudy File
Todd Forsyth
Deb Frauenholz
Annie Futrell
Ann Giorgi
Roz Goorin
Lori Greene
Fred Guerriero
Nathan Hart
Christy Hinkelman
Makhfuza Islomova
Cynthia Jankowski
Robert Lee
Victoria Luketich
Cinda Maxwell
Katy Ohliger
Donna Priore
Daniel Reese
Krista Reitz
Marie Romanelli
Alan Shadgett
Ingrid Shaw
Warren Smith
Celeste Vitunic
Tess Wilson
Education Volunteers

Benedum Tour Docents
HS Apprentices
Opera on TAP
Volunteer Ushers
Education Volunteer Teams

MARKETING AND PR
Christian D. Cox
Director of Marketing
and Communications

Allison M. Ruppert
Marketing and Community
Relations Manager

Mark Marston
Manager of Audience Services

Regina Connolly
Group Sales Manager

Susan Solito
Office Manager and Ticketing Associate

Emily Hughes
Digital Marketing Manager

Lauren Cornwell
Marketing Intern

PRODUCTION
Tara E. Kovach
Director of Production

Cindy Knight
Stage Manager

Kiera Bennett
Emily E. Duffin
Assistant Stage Managers

Frances Rabalais
Assistant Stage Director

Annie Scheuermann
Production Intern

Jason Bray
Costume Shop Manager

Roza Martinovic
Head of Costume Shop & Wardrobe

Kim Leo
Assistant Wardrobe/Key Costume Shop

Kari Kramer
Virginia Phillips
Christyann Trbovich
Stitchers

Sean E. West
Head Carpenter

Steve Gogarty
Head Electrician

Michael W. Stack
Head of Properties

Thomas Anklely
Dave Dwyer
Zach Dwyer
Michael Dwyer West
Assistant Carpenters

Kevin Hogan
Kelli Brannigan
Assistant Electricians

Todd Kulik
Assistant Prop Master

Johnmichael Bohach
Prop Coordinator

Luis Hernandez
Supertitle Operator

Gordon Crocker
Supernumeraries Captain

To schedule your advertising in
Pittsburgh Opera's program,
please call 412-471-1497 or email
advertising@culturaldistrict.org.

BENEDUM DIRECTORY

LATECOMERS

To ensure the quality of our productions, latecomers will be taken to the best available seat until intermission. Refunds or exchanges are NOT issued to latecomers.

OBSTRUCTED VISION

Supertitles, the English texts projected above the stage, will be fully visible to most Benedum patrons. However, supertitles will not be visible to anyone seated in row W (center) or the side sections of rows V-ZZ on the Main Floor. By necessary placement of the screen, the architecture of the Benedum precludes visibility in these areas.

CHECK ROOMS

Attended check rooms located on the Gallery and Promenade levels are open during the winter months. Coin-operated lockers are located on the Promenade and Mezzanine levels.

EMERGENCY INFORMATION

An Emergency Register Book is located in the entrance lobby to the right of the entrance doors. Refer emergency calls to 412-456-2610. Please turn off pagers, cell phones, and watches during the performance, and notify your contact of this emergency number and your seat location. This theater is equipped with an Automated External Defibrillator.

ELEVATOR

Located off the Grand Lobby, serving various levels of the Benedum.

FIRE EXITS

Located at all levels and clearly marked. Use ONLY in case of emergency.

LOST AND FOUND

Call Benedum Center Lost and Found at 412-456-2604 weekdays.

REFRESHMENTS

Bars are located on the Gallery, Grand Lobby, and Promenade levels. Drinks may be purchased prior to performances and during intermissions. Food and beverages are not permitted in the auditorium.

STAGE AREA

Limited to performers, staff, and authorized visitors.

RESTROOMS

Lounges for ladies and gentlemen are located on the Gallery, Promenade, and Mezzanine levels. Restrooms for patrons with physical disabilities are located on the Grand Lobby level.

TICKET SERVICES AND BOX OFFICE HOURS

Tickets to all performances may be purchased at the Box Office at Theater Square, Penn Avenue, between Sixth and Seventh Streets. Hours of operation are Monday - Saturday, 9:00 AM - 9:00 PM; Sunday, 12:00 - 6:00 PM. In conjunction, the Benedum Center and Byham Theater box offices will be open on performance days, two hours before curtain time, through intermission.

BAG POLICY

A guest to a Pittsburgh Cultural Trust venue or event may enter with one bag that is no larger than 16" x 16" x 8". The definition of a bag includes, but is not limited to, purses, tote bags, duffel bags, suitcases, knapsacks, backpacks, packages, cartons, paper sacks, briefcases, portfolio cases, binocular cases, camera equipment cases, and any other type of device or vessel used for carrying or concealing items. Bags are subject to search and theatergoers may be requested to open their jackets prior to entering. Guests with prohibited items may return them to their vehicles. Unattended items left outside the facility doors will be discarded to ensure patron safety.

INFORMATION AND TICKET CHARGE NUMBER

MasterCard, Visa, Discover, and American Express are accepted. Ticket Charge operates Monday - Friday, 9:00 AM-6:00 PM; and Saturday and Sunday, 12:00-4:00 PM. Orders received fewer than 5 days in advance will be held for pickup at the Box Office. A \$3.50 charge per ticket will be made on phone orders. Call 412-456-6666 for tickets or Benedum Center show information. All sales are final.

AUDIO COMMENTARY

Pittsburgh Opera offers an Audio Commentary service for patrons with visual impairments during Tuesday performances at the Benedum Center. Through Channel 2 on the Assistive Listening Devices, patrons can hear the supertitles read simultaneously with their appearances on the screen, as well as descriptions of the set, characters, and costumes. Pittsburgh Opera also offers Braille and large-print programs. Inquire at the Education table and Guest Services Center.

NOTIFICATION TO PATRONS WITH PHYSICAL DISABILITIES

- Wheelchairs are available for transition from entrance to seat location.
- Wheelchair locations are available on the Main Floor only.
- Restroom facilities for patrons with physical disabilities are located near the Grand Lobby.
- Dog guides accommodated. Please inquire at the Box Office when buying tickets.
- Water cups are available in restrooms or at any bar location for the physically disabled.
- Elevator in Grand Lobby serves various levels of the Benedum Center.
- Door personnel and ushers are available for assistance.
- Notice should be given at time of purchase if a wheelchair or disabled patron location is required.
- Assistive Listening Devices, Braille, and large print programs are available in the Guest Services Center off the Grand Lobby.

BENEDUM CENTER ADMINISTRATION AND TECHNICIANS

Eugene F. Ciavarra
Vice President, Operations

Susan Sternberger
Theater Services Director

Stacy Bartlebaugh-Gmys
Manager of Volunteer Services

Joanna Obuzor
Operations Manager

Gerald Stevens
Facilities Manager

Bernard M. Bloom
Director of Production

Autumn Abernathy
Production Manager

Bryan Briggs
Production Manager

Mick Lohrer
Head Carpenter

Christopher Evans
Sound Engineer

Will Dennis
House Electrician



Helping our
clients create
charitable
gifting
legacies



SCHNEIDER DOWNS

Wealth Management

Customized portfolios
for high net worth
investors

Nancy Skeans
nskeans@schneiderdowns.com
(412) 697-5376

Don Linzer
dlinzer@schneiderdowns.com
(412) 697-5222

CAST AND OPERA SUBJECT TO CHANGE WITHOUT NOTICE. ALL SALES ARE FINAL.
USE OF CAMERA AND RECORDING EQUIPMENT IS STRICTLY FORBIDDEN.

DAVID YURMAN



ORR'S rocks.
Squirrel Hill Sewickley